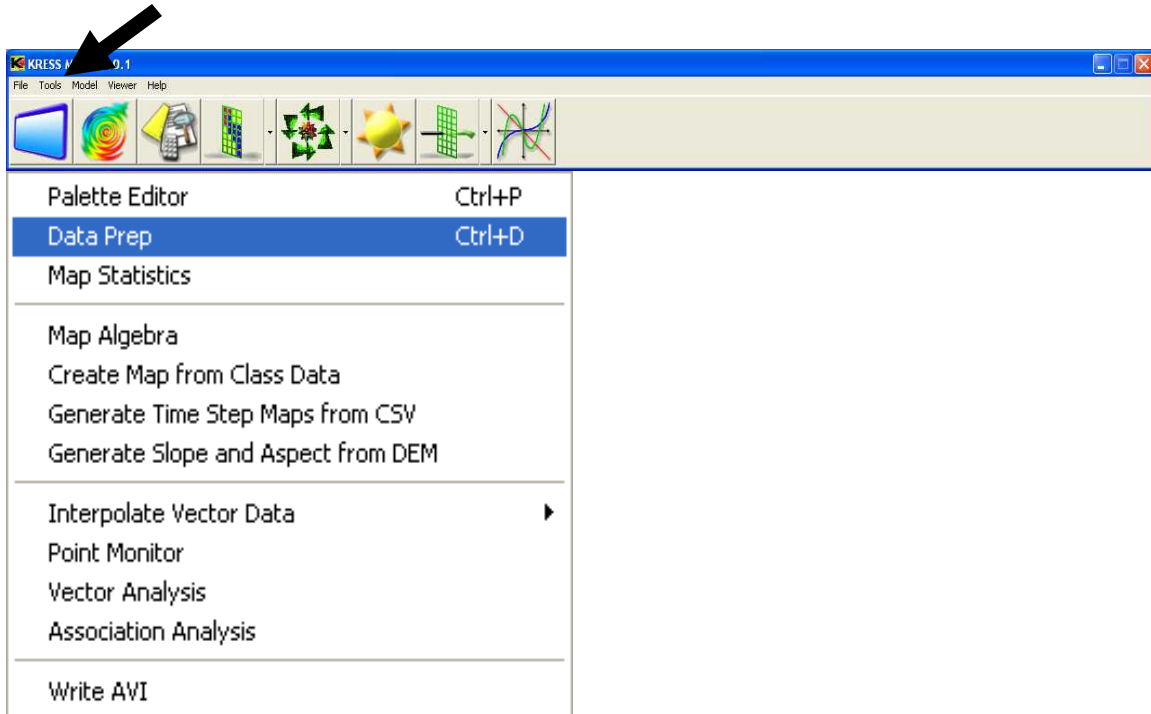
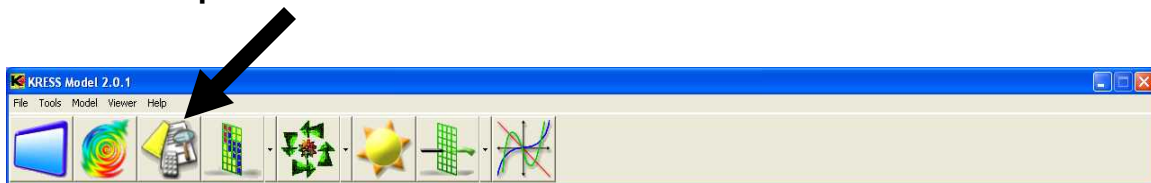


Data Preparation

Data Preparation is found in the **Tools** menu or can be accessed directly by simultaneously pressing the control key + D. The data preparation window can also be accessed by pressing the **Data Prep** button or the down arrow button on the button bar then the data preparation choice on the dropdown menu as shown below.

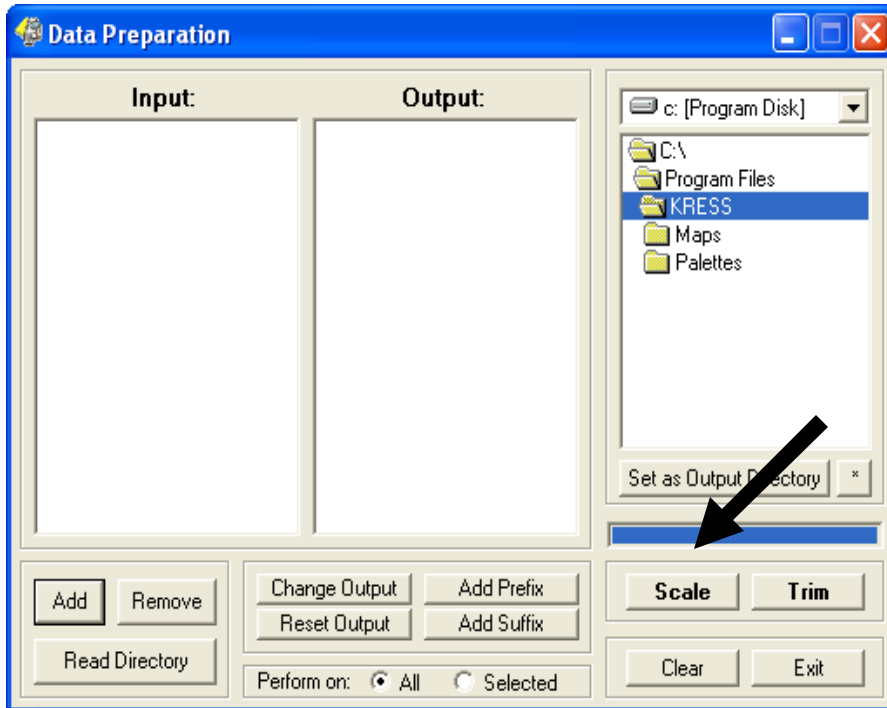


The **Data Prep Button** on the toolbar is found as shown below:

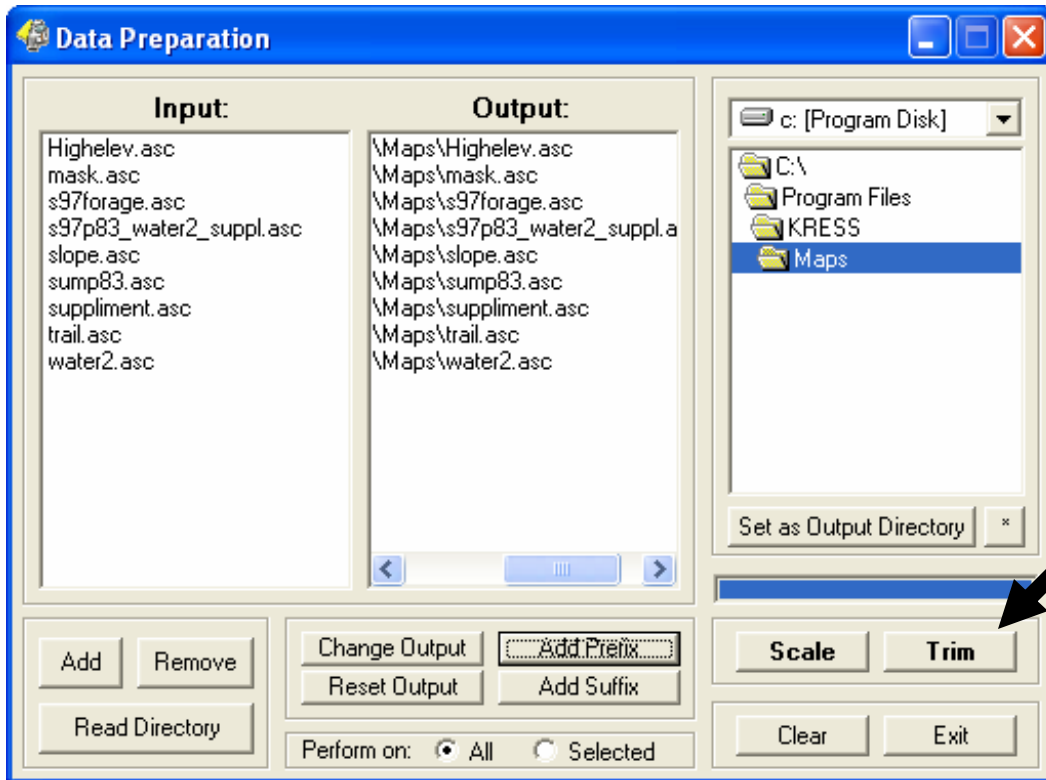


In order to work with the KRESS Modeler program, all data must be scaled to the same range and landscape area. Because many of the different factors are in different units, they must be converted to a format suitable for general comparison. This is the purpose of the **Scale** function. When the user scales a file, all the values are converted proportionally to fit in the range from 0 to 255. This way, all measurement units can be directly compared and importance or “factor weight” can be assigned.

When the user clicks the scale button, the user will be asked if they want to scale between minimum and maximum set values. This is useful for things such as sequences of temperature maps so that the data can be scaled as a set while retaining a measure of comparison between maps. It is also useful if a set is being scaled for AVI output.



The **Trim** function is used to make sure all the data sets cover the same area. The trim function allows the user to designate which map to trim to by giving the option for "intersection," trimming to the smallest map, "union," trimming to the largest map, or "single factor," which allows the user to select a map to trim to from a drop down menu. Any time a smaller map is trimmed to the larger size, any location not in the small map will be given a no-data value, so the original data is not compromised by distortion or alteration in any way.



Keep in mind that for data sets to work with KRESS, the raster cells must be of equal cell size and location. Trimming and scaling will not affect the cell size, and so sets of unequal cell size are incompatible within KRESS.

To select the files to be scaled or trimmed, either select the files manually using the **Add** button, or select all the files contained in a directory folder by selecting the directory in the window on the right side of the screen and pressing the read directory button.

The **Remove** button will eliminate the selected file from the list. If the user doesn't want to save over the original files, use the **Change Output** button to select new filenames for the user scaled or trimmed files. **Reset Output** will restore the original file names, and will save over the original files. **Add Prefix** allows the user to designate a prefix for all the scaled or trimmed files. **Add Suffix** allows the user to designate a suffix for all the scaled or trimmed files.

The **Input** and **Output** windows tell the user the names of the files the user is scaling or trimming, and what the new files will be saved as. The **Clear** button will erase everything from the window allowing the user to start from scratch. The user is also given the choice of performing operations on everything, or just certain user-selected data sets by choosing the appropriate option button: **All** or **Selected**. The user can also choose an output directory by selecting the

directory in the window on the right side of the screen and clicking the **Set as Output Directory** button. A new directory can be created by pressing the * button, but then the **Set as Output Directory** button must still be pressed to designate that directory as the output directory.

