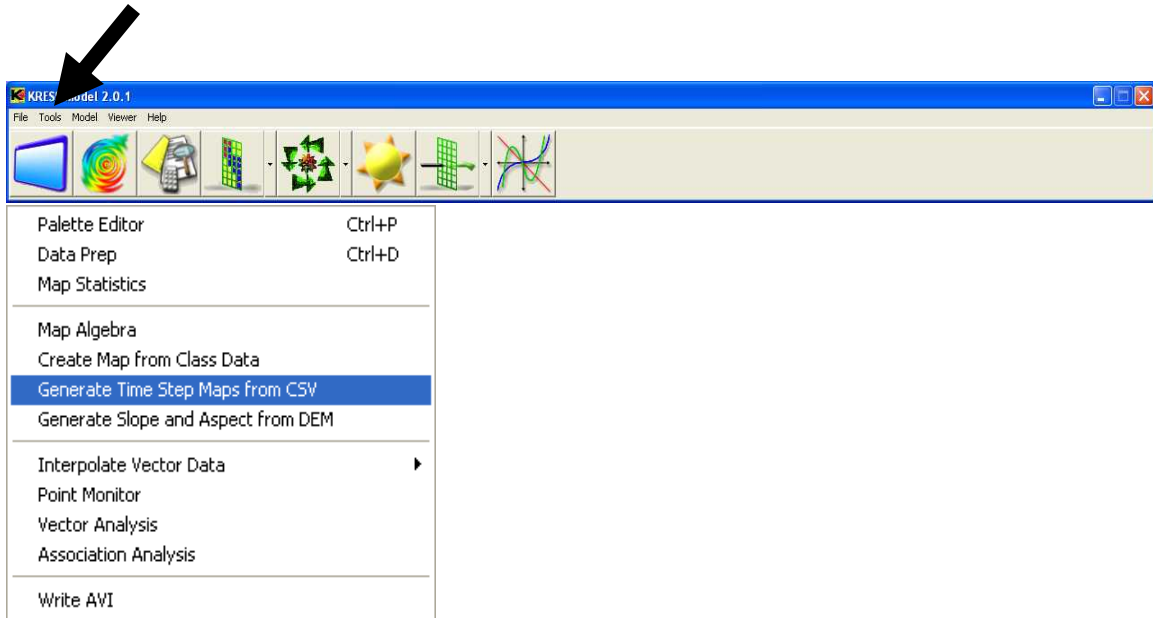
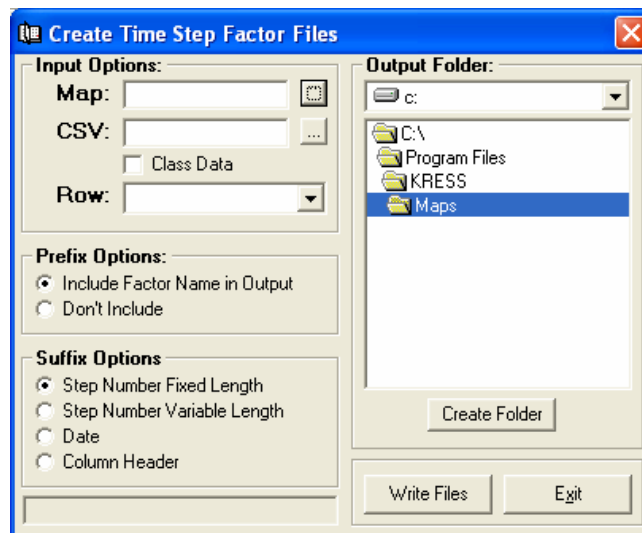


Generate Time Step Maps from CSV Files

As landscapes progress through time they develop and change. The KRESS Modeler allows us to create time-step maps by assigning values to a class map. The user can reach the **Generate Time Step Maps from CSV Files** from the **Tools** menu, or by clicking the data icon.



To make the time step maps, the original map must be selected by either typing in the name or clicking the “...” icon next to the **Map:** label. Also required is a CSV file which the user can create using virtually any editing or word processing program (MS Word®, MS WordPad®, MS Notepad®, etc.) or in a spreadsheet program such as Microsoft Excel®.



Files must be in ASCII text format that has a comma delimiter between values and a carriage return at the end of each row. An example of a possible CSV file is shown below.

Class,	Jan,	Feb,	Mar,	Apr,	May,	Jun
1,	100,	150,	300,	600,	750,	900
2,	200,	400,	600,	800,	1100,	1450
3,	200,	400,	700,	900,	1200,	1650
4,	100,	150,	200,	400,	600,	700
5,	250,	450,	700,	1200,	1800,	2500
6,	250,	450,	750,	1100,	1400,	2000
7,	100,	200,	350,	650,	800,	1100
8,	75,	150,	225,	300,	450,	600

For class data, the **Class Data** checkbox must be selected. This means that the class data number (like the far left hand column in the above table) will be replaced with the corresponding number for the month rather than used as a factor, as non-class data would. Basically, if Class Data is selected, the numbers in the original map are replaced whereas if it is not selected, the CSV provides a factor which is multiplied with the number in the original map.

The **Row** dropdown menu will display the first entry of each row for the selected CSV file. The user must specify which row gives the time step information. For example, in the CSV shown above, the Row dropdown would include “class,” “1,” “2,” etc. The user would have to specify “Class” as the appropriate row.

The user is given several options for the name of the output file. If **Include Factor Name in Output** is selected under the **Prefix** label, then the factor name will be put on the front of the filename of the new files. If the user does not want the factor name in the output, they can select **Don't Include**. For the suffix, the user can choose **Step Number Fixed Length**, **Step Number Variable Length**, **Date**, or **Column Header**. The appropriate box should be selected based on the intended use of the data.

When all steps have been completed, the user must specify an output directory in the window on the right side of the screen. The user can create a new directory by pressing the Create Folder button. Last, the Write Files will begin processing the time step maps.