

# Installation

## System Requirements

The KRESS Modeler requires that you use Microsoft Windows XP or higher operating system, on an IBM PC compatible computer with the following minimal specifications:

Processor: Intel Pentium IV, at 400MHz  
Video: A video card that supports 24bit at 1024x768  
Hard drive: A minimum of 32MB free, plus additional space for storing images

## Setup

You must have administrative rights or be logged-in as a member of the administrators group when you install the KRESS Modeler on Windows<sup>®</sup> NT/2000/XP or higher. The installation program will inform you if you do not have administrative privileges and will abort the installation process. If this happens, you should contact your computer administrator and have him/her install the program.

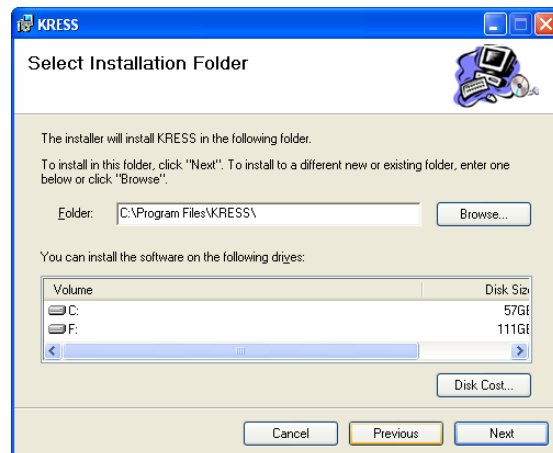
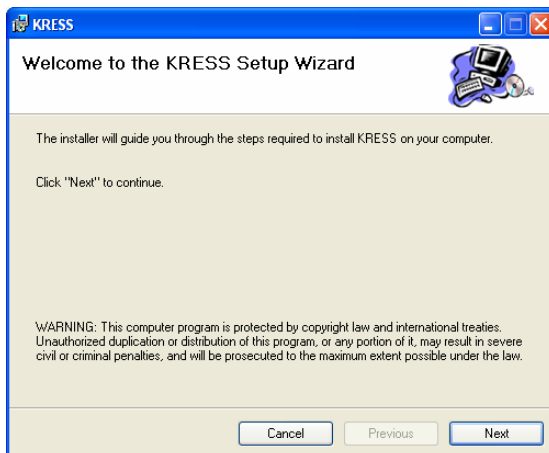
Setup of the KRESS Modeler is very simple. To perform the installation, follow these steps:

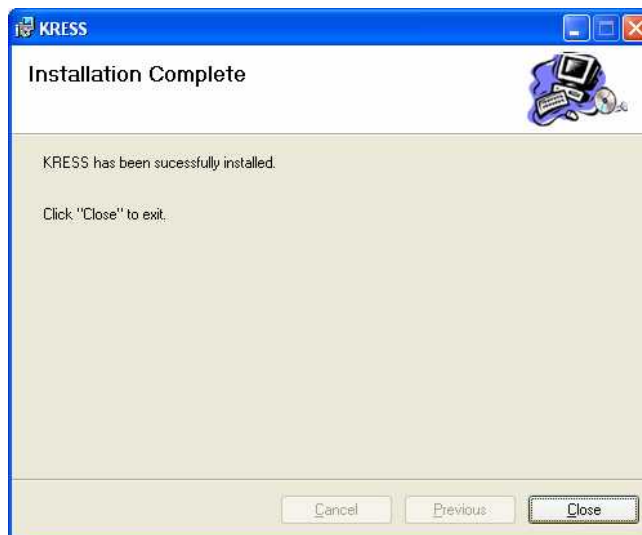
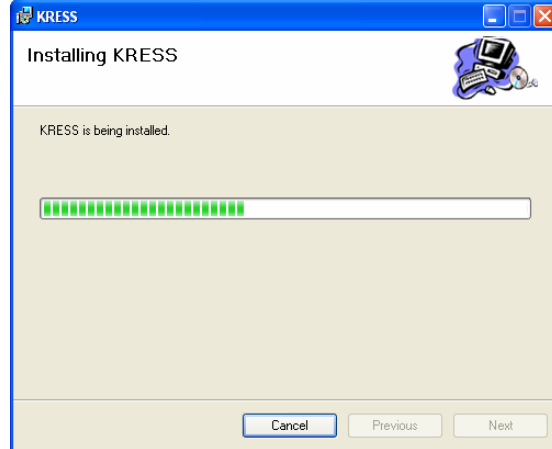
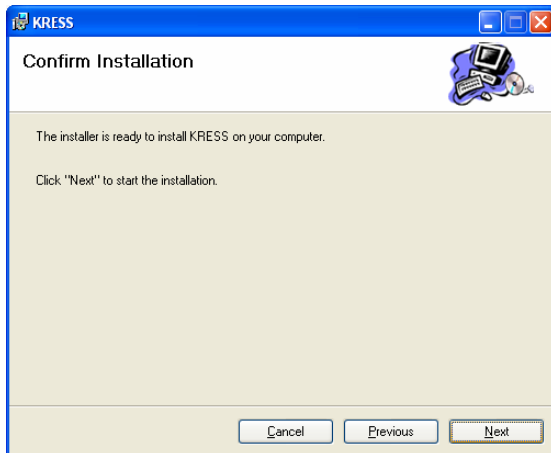
Close any open programs and uninstall any previous versions of KRESS

Insert the KRESS Modeler CD in the drive

Execute KRESS.msi from the KRESS Modeler CD

Follow the direction on the screen





At the end of installation run KRESS from the Start Menu. In order to license the program, which allows you to use it, you need to begin registering the program. When starting KRESS, it will ask to whom the product should be licensed. **Insert image** After typing in this information, a file will be created in the KRESS folder entitled "licenseprep.txt." This file, and the following information, should be e-mailed to technical support ( [douglas.e.johnson@oregonstate.edu](mailto:douglas.e.johnson@oregonstate.edu)):

1. User Name
2. Address
3. University, Company, or Organization
4. E-mail Address
5. Phone Number
6. Fax Number

Once the file, and the personal information, has been e-mailed, a license key file will be generated ("license.txt") and e-mailed back to the user. Copy this file into

the KRESS program file directory (the same location where the "licenseprep.txt" file was found). With this key in place, the program should run. Keeping track of user license information allows us to inform users as to changes/updates in the program.