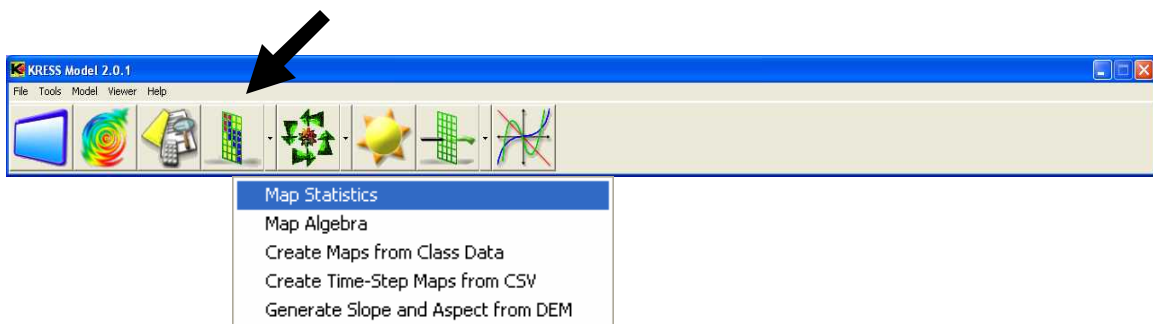
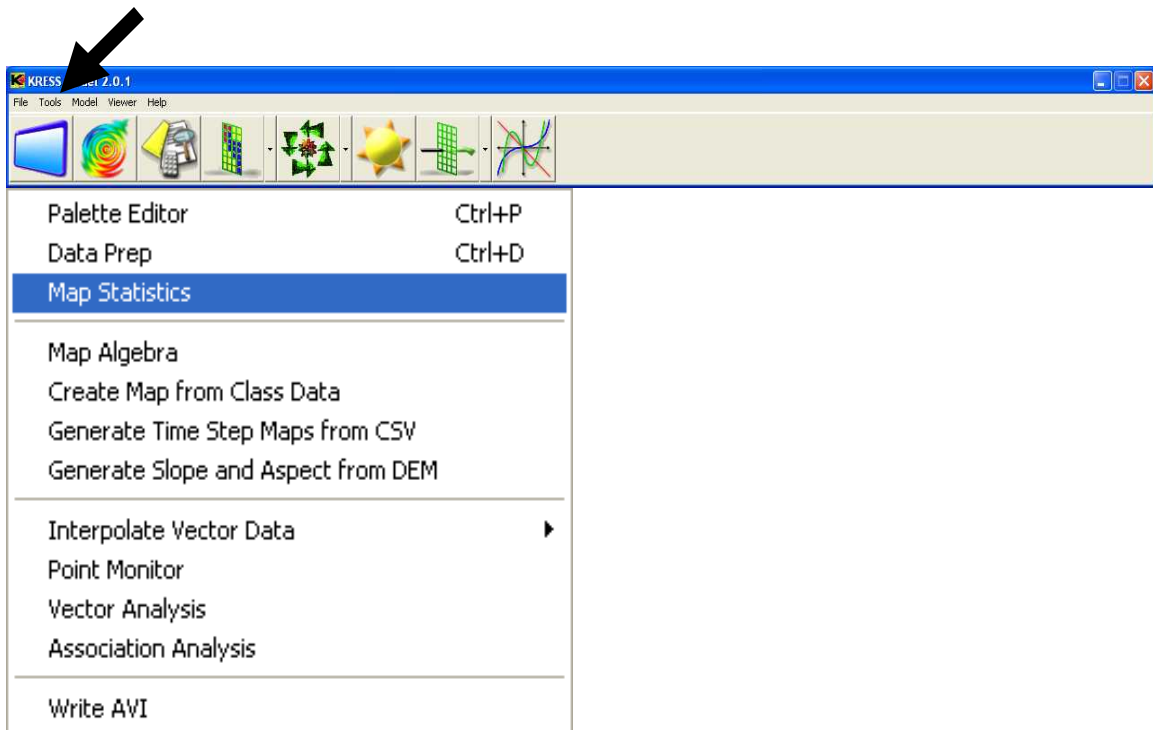


Map Statistics

The Map Statistics tool can be accessed by clicking on **Map Statistics** under the **Tools** menu.



This form allows the user to view map parameters (number of rows, columns, cell-size, etc.) and map statistics (maximum value, minimum value, mean, etc.) as well as showing a frequency histogram for the map. Maps are added by clicking the **Add** button.

If multiple maps are added, they can be selected by clicking the appropriate map in the Maps frame, then the frequency histogram and statistics will automatically update. Statistics for an individual map can be exported as a .txt file by clicking the **Export Current Statistics** button. The **Export Cumulative Statistics** will export the statistics for all the maps that have been added.

The frequency histogram can be exported as a .csv file by clicking the Export button under the histogram.

