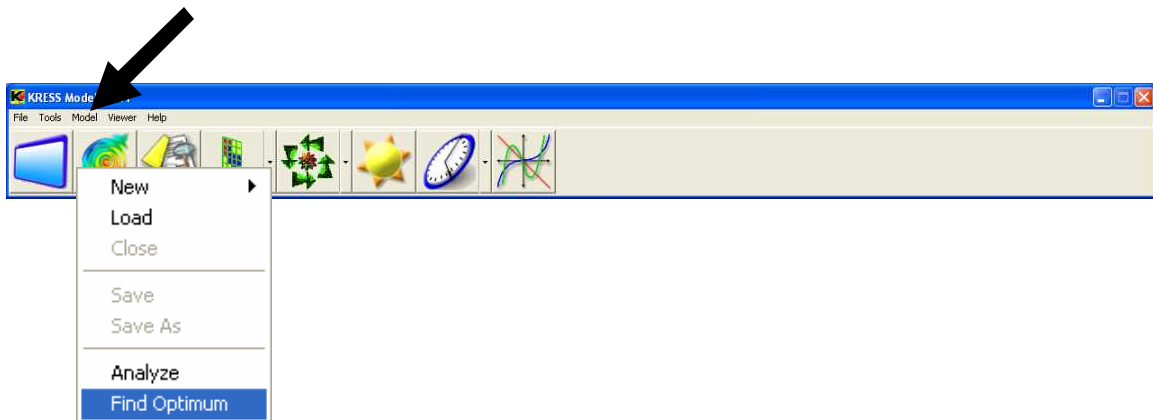
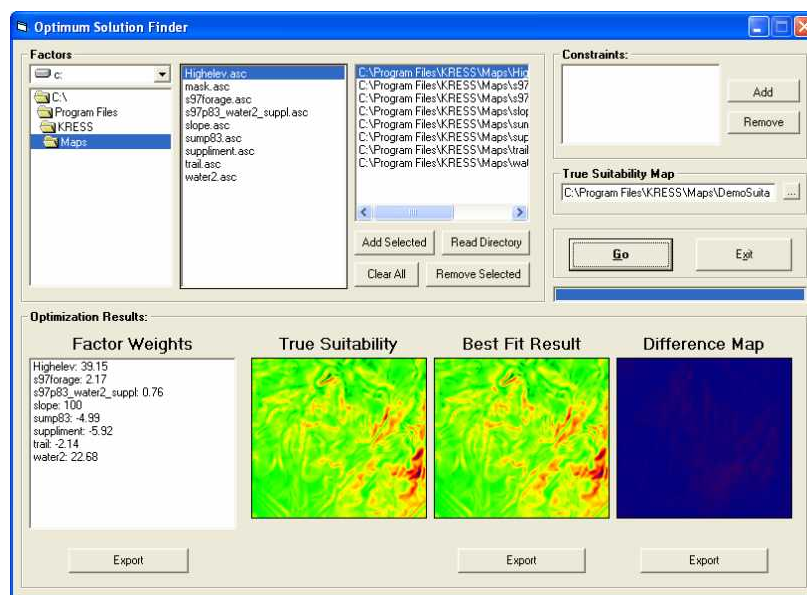


Optimum Solution Finder

The Optimum Solution Finder can be accessed by clicking **Find Optimum** under the Tools menu. This modeler will take a list of factors and find the best possible weighting of those factors to match a user designated true suitability map based upon a least squares fit. It will only provide linear factors.



First, the user must select all the relevant factors by selecting the filenames and clicking the **Add Selected** button. The user can also click the **Read Directory** button to input all the readable files in a directory. Constraints can be browsed for and added by clicking the **Add** button in the **Constraints** frame. Lastly, the user must designate the ideal suitability map by clicking the "..." button next to the **True Suitability Map** label. Clicking the **Go** button will run the process.



The output factor weights and the generated best fit result and difference map can be exported by clicking the **Export** button underneath the appropriate display frame.