

# Using the KRESS Modeler

## Starting KRESS Modeler

When you start the KRESS Modeler for the first time, a window will appear informing you that the default working directory is not valid. The working directory allows you to set a location from which the majority of the files will be loaded. Click “OK” to continue loading the program.

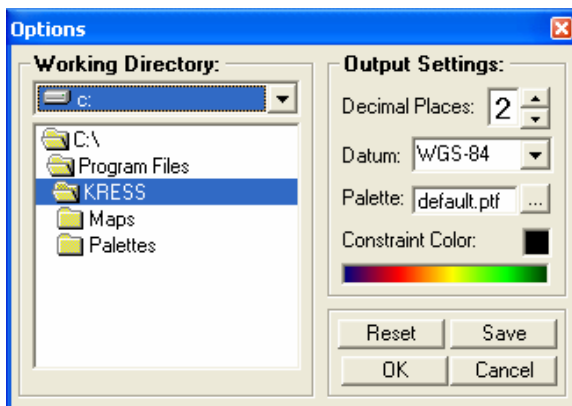


After starting the KRESS modeler, you will see the splash screen followed by the toolbar. The toolbar consists of a series of drop-down menus and buttons, as shown below. The File dropdown menu is located on the far left side of the bar. When it is clicked with the mouse, you are given two choices: Exit, to exit the program, or Global Settings, which allows you to set the working directory.



## Global Settings in the KRESS Modeler

Global Settings allows you to set the working directory for your project. We strongly encourage users to keep projects in separate, individual folders for organizational purposes. There are typically many files either used or generated by the KRESS Modeler which can lead to confusion unless they are well organized, named appropriately, and kept together.



Global Settings also allows the user to set the default number of decimal places for outputs of data processing and the default palette. “Datum” defines the model of the surface of the earth based on a surveyed network of physical points. Both horizontal and

vertical datums are defined. USGS topographic maps use the North American Datum of 1927 (NAD27). Other common datums are the North American Datum of 1983 and the World Geodetic System (WGS) of 1984, which is geocentric and globally consistent within  $\pm 1$  m. This datum is commonly used in GPS units. There are over a 100 other datums in use throughout the world. We suggest the user set the datum at the beginning of the project and document the reasons for the choice.

Global Settings also allows for a constraint color to be set. A constraint map is one that defines the area of interest or the “solution space,” and can be of any shape, not just the rectangular view shown on the computer screen. The KRESS Modeler allows the use of constraint maps that are applied via a “mask”. This procedure uses a mask or raster map that contains values of “1” in landscape areas that are in the solution space and “0” for areas that are unavailable. For example, a constraint might be a county boundary (the area being analyzed is only within one county), property boundary or pasture, because the animal has to stay in the pasture no matter how much forage is available on the other side of the fence. The constraint color sets the color for areas that are defined to be outside a study area by a constraint file. We generally set the constraint color to either black or white and use a suitability level palette that does not include these colors.