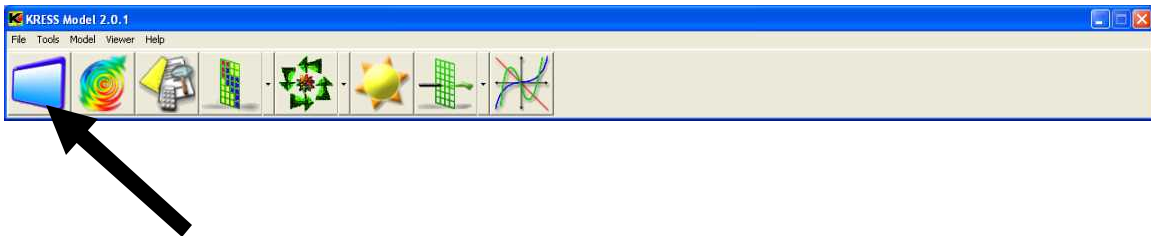


Viewer

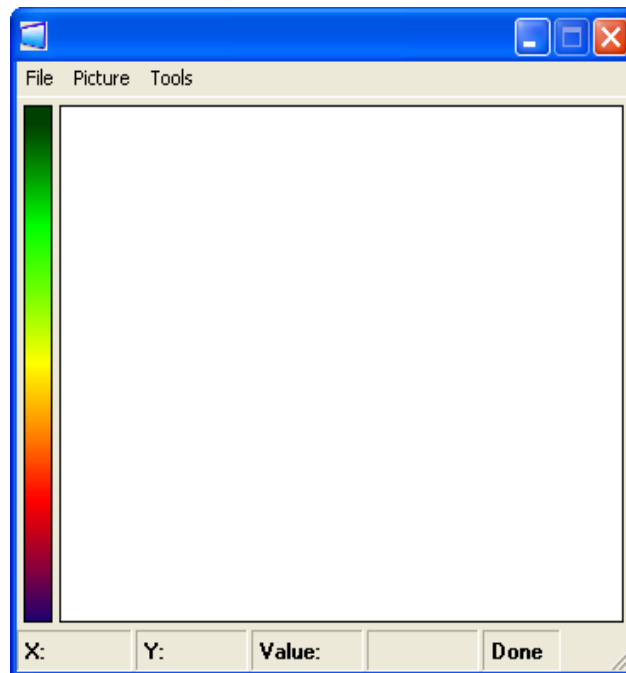
The KRESS Viewer is used for viewing maps and data files. It can also be used to compare maps with aerial photographs, topographic maps, and urban maps downloaded from TerraServer. The Viewer can be accessed by clicking on **New View** under the **Viewer** menu bar, or by pressing **Ctrl+V**.



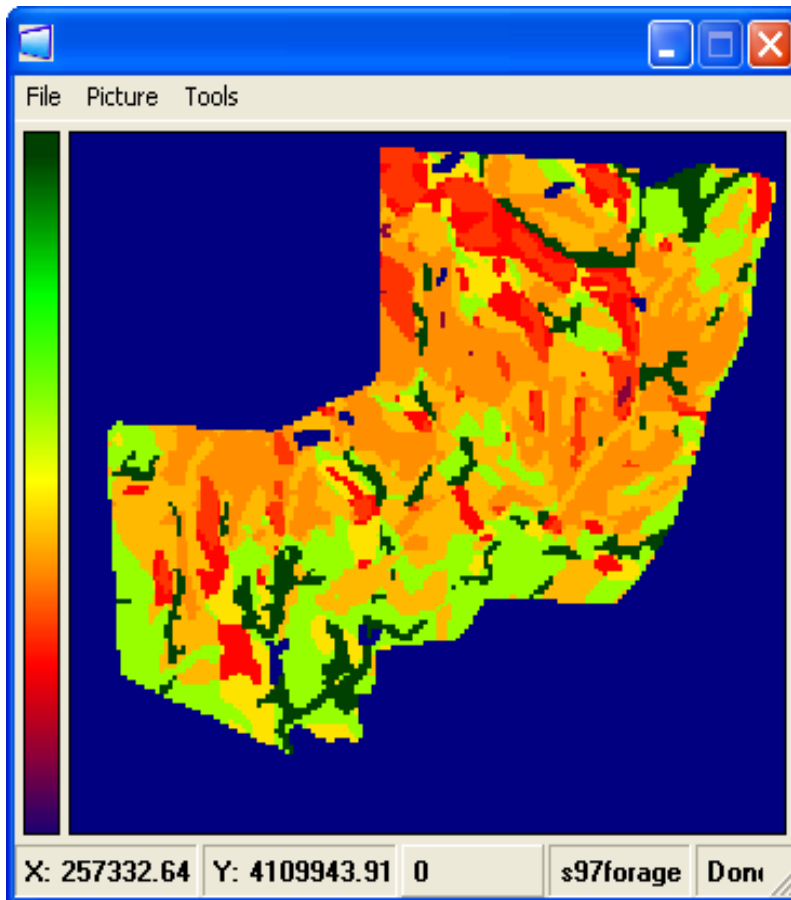
or



To open the viewer window

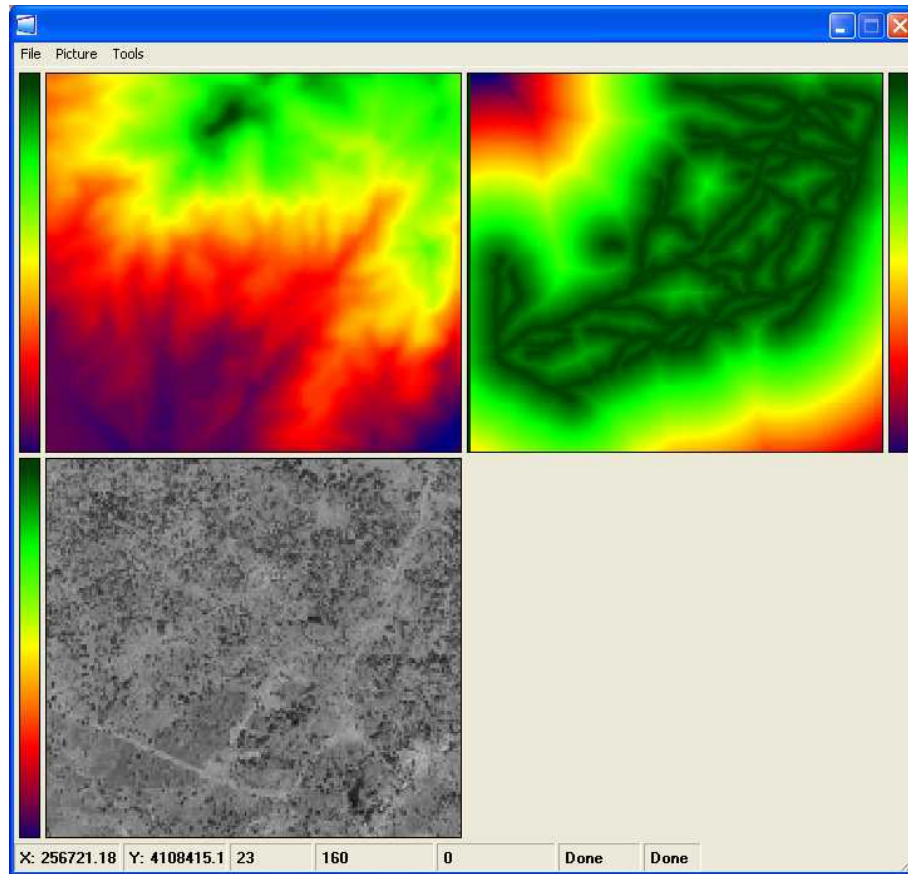


To view a map, click open under the File menu.



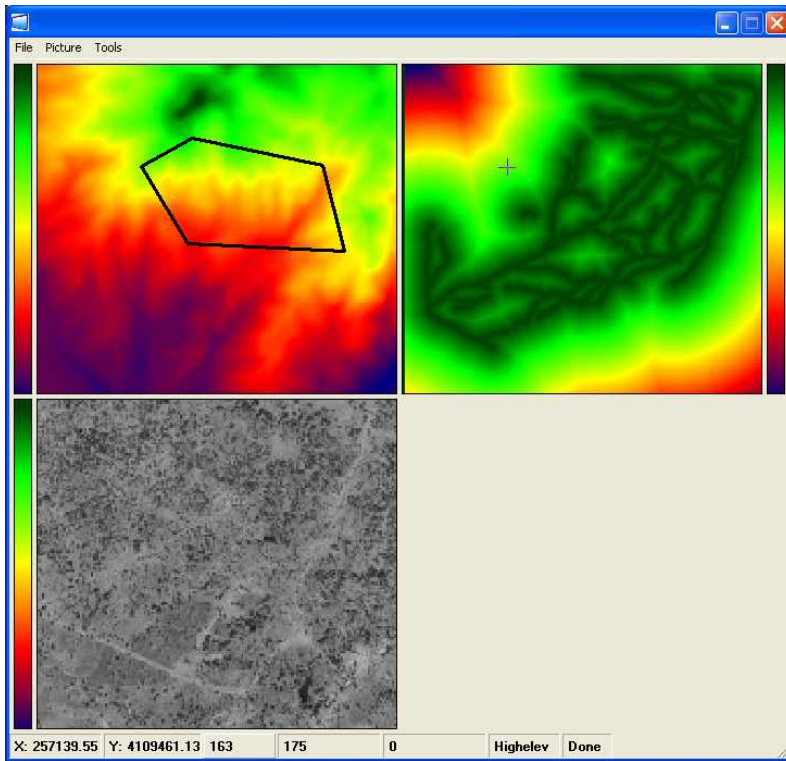
To add more maps, click **Insert Another** under the **Viewer** menu. To view multiple maps, they must all be the same size, dimensions, and geographical location. To insert an aerial photograph, click **Aerial Photograph** under **Get Map from Web** on the **File** menu. The KRESS Viewer will ask the user for their UTM zone, and then automatically download the corresponding aerial photograph to match the user's map being viewed. Topographical maps and urban maps can be loaded the same way by clicking **Topographic Maps** and **Urban Maps**, respectively, under **Get Map from Web** on the **File** menu.

The value of a cell can be read on the bottom of the screen along with the X and Y coordinates by holding the mouse over the desired area. Individual maps can be closed by clicking on the map, then clicking **Close Selected** under the **File** menu. The user can click **Close All** under the **File** menu to close all the open maps. The palette used for display can be changed by clicking **Change Palette** under the **Picture** menu.



The user can access the zoom controls under the **Tools** menu. By clicking **Auto-Zoom All**, the zoom tools will affect all the maps, not just the selected one. After zooming in on an area, the user can export just that area as a new map by clicking **Export Current Region as New Map** under the **Tools** menu.

Distances and areas can be calculated using the **Metric Tool** under the **Tools** menu. To calculate a distance, click the starting point, and then each point in the line in the correct order. Double clicking the last point will end the line and the distance can be read in meters or English system units by clicking the appropriate option button on the **Metric Tool** box. To calculate an area, follow the same process, but on the last point, right-click, and the last point and first point will automatically be connected. The area can also be displayed in metric or in English units. To exit the Metric Tool form, click on Metric Tool under the **Tools** menu, or right-click on the form.



Metric Information	
Segment Length:	288.1003 m
Total Length:	2601.2271 m
Polygon Area:	39.462 ha
	<input checked="" type="radio"/> Metric <input type="radio"/> US