

# KRESS Modeler Version 2.0.1

## Tutorial Exercises

26 September 2005

Douglas E. Johnson, KRESS Project Leader, OSU, Corvallis, OR  
Mounir Louhaichi, Oregon State University, Corvallis, OR  
Norman R. Harris, University of Alaska/Fairbanks, Palmer AK.  
Patrick E Clark, NWRC, USDA/Agricultural Research Service, Boise, Idaho  
David Ganskopp, USDA/Agricultural Research Service, Burns, Oregon

Michael D. Johnson, Supervisory Programmer, USC, Los Angeles, CA  
Kipp E. Johnson, Programmer, USC, Los Angeles, CA

Melvin R. George, Research Program Leader, UC/Davis, Davis, CA

KRESS Modeler Source Code, Users Guide, & Tutorial  
©2001-2005 All rights reserved  
KRESS Project,  
Department of Rangeland Ecology & Management  
Oregon State University  
Department of Agronomy and Range Science  
University of California/Davis

# ***Tutorial Exercises***

## **Using KRESS Model Exercises**

### **Cattle Distribution in the California Foothills**

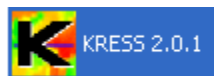
#### ***About this exercise and the data set***

The data set used in this exercise is taken with permission from Dr. Norman Harris' doctoral dissertation monitoring influences on cattle distribution in the California foothills. The objective is to predict animal movement across the landscape based on the suitability of anticipated grazing areas and expected resting spots. There are three data layers included in the analysis: Forage availability, distance to water, and distance from supplement. The only constraint used is the boundary.

#### ***Exercise 1***

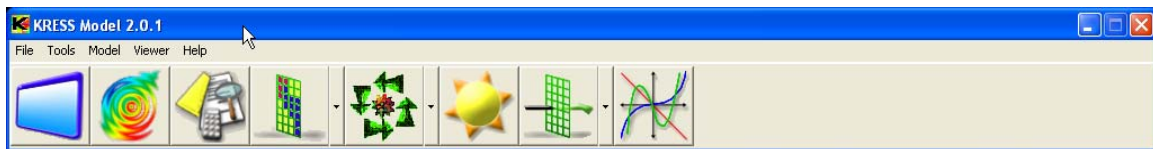
### **Getting Started**

To start running the Model, double-click on the KRESS application icon.



This will automatically load the KRESS Model program version 2.0.1.

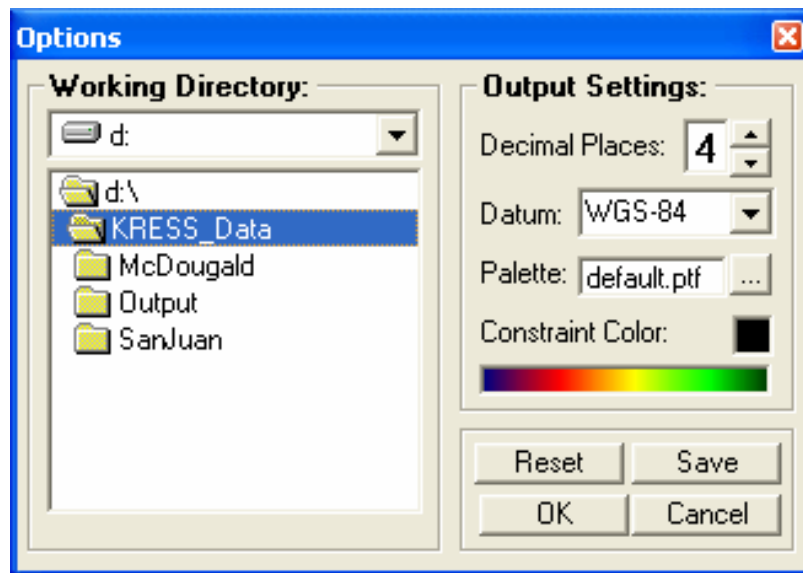
Once the system has loaded, notice that the screen has two types of command menus, the top one consisting of drop-down menus and the bottom one showing pictorial emblems. The drop-down menus – File, Tools, Model, Viewer and Help – are used for the most control and manipulation of the program. The tool bar of icons is used to control display preferences and to access commonly used facilities.



As your mouse moves over the tool bar icons, notice that a short text label appears below each picture, describing its function. This is known as a *hint*. Several other features of the KRESS Model interface also incorporate hints to facilitate use.

## Working Directory

A project is a compilation of data files. Therefore, it is necessary to create a “Working Directory”. This is the most fundamental element in organizing data files; both the input files to be used and the output files subsequently created by you, as well as your written analysis results. Creating a working directory activates the “Project Environment” module, allowing you to set the data paths of your file folders. In order to access the working directory, go to the drop-down menu labeled “File” and click on the selection “Global Settings”. This will open a new window, as pictured below.



The first time the KRESS Model is launched, the program refers to the default working directory, usually found in the c (or data) drive, named c:\Program Files\KRESS. Use the drop-down menu to change the working directory drive. On the right-hand side of this window there are options for the output settings. You can either use the default settings or reset your preferences pertaining to the number of decimal places, the display palette and the constraint color. Factors are displayed in multiple colors, in contrast with the constraints, which are shown in a single solid color. For this example, we are using the KRESS Model Default Quantitative Palette. You have the option also to set the number of decimal places and the datum.

It is possible to specify a different input or output path using the browse button (“...”) and selecting from another folder. The instructions are written assuming that all default paths were accepted during installation. If the tutorial data was installed and then routed to a different location, the files will be found there rather than in the default settings; therefore, these instructions may not be applicable and should be adjusted accordingly.

## Setting Up Your Data Folders

To facilitate organization, compile all the data you want to use in one folder and then create a destination folder to hold all the output files the model will generate for you. The naming of these folders is extraneous, but should be easy for you to identify to avoid future confusion.