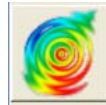


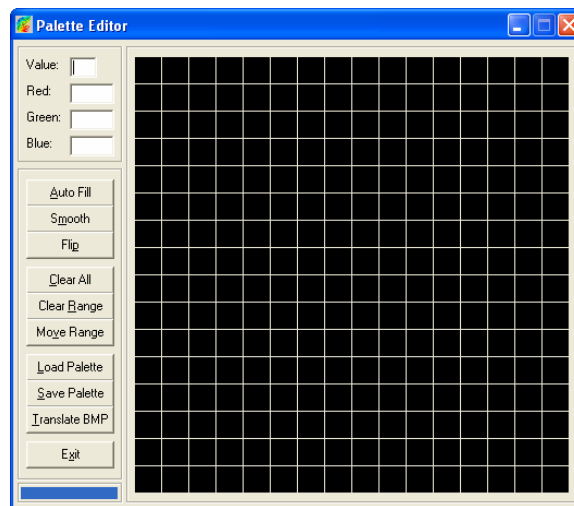
## Exercise 2 Palette Editor

In this exercise you have the option to either open an existing palette or create a new palette. In the palette folder you have quite a few palettes that have already been created to choose from.

### Step 1: Loading the Palette Editor

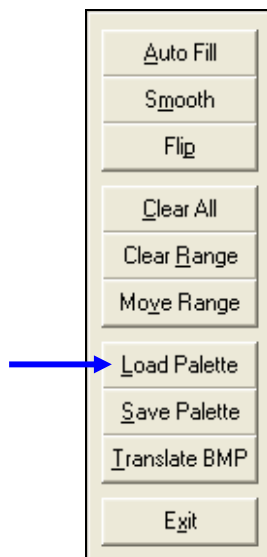


Click on the palette editor button

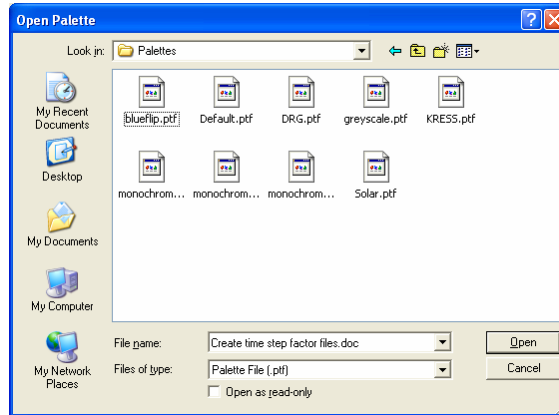


### Step 2: Loading an Existing Palette

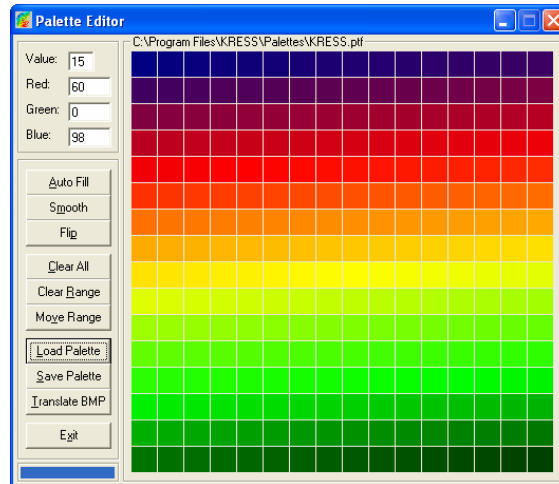
Click on the “Load Palette” button to load an existing palette.



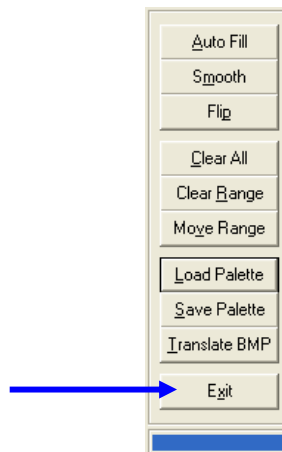
Browse to the palette folder. Choose a palette. The KRESS palette is being selected for this exercise.



The selected palette will be displayed.



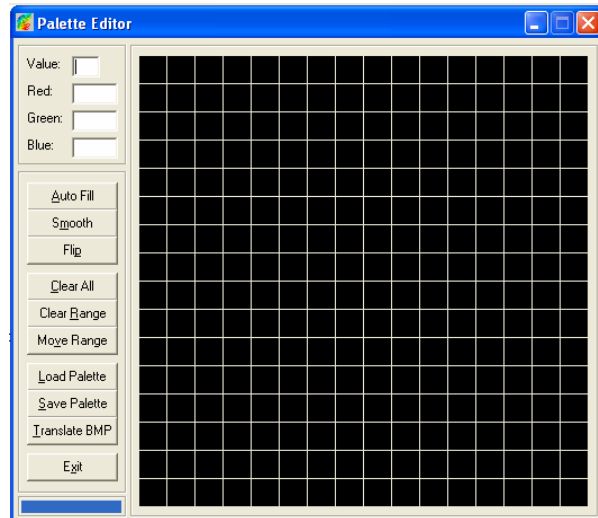
Click on "Exit" to close the window.



### Step 3: Creating a New Palette

In the next steps, we will create a new palette by mixing three colors.

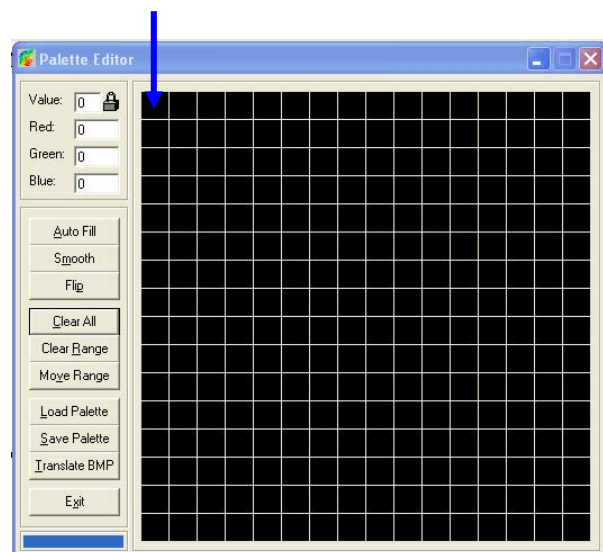
Reopen the palette editor.



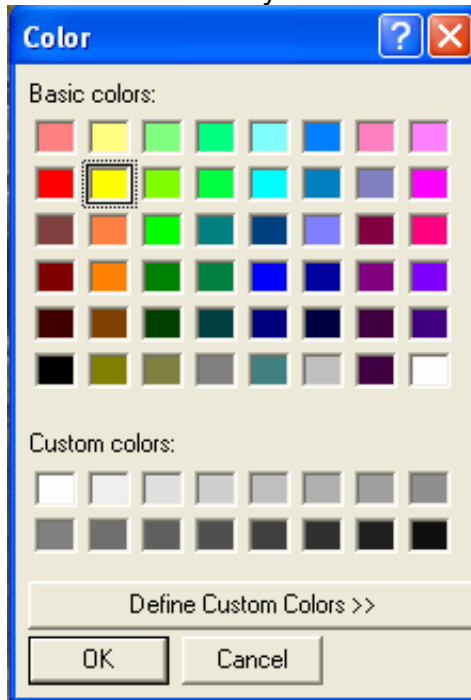
Move your cursor over the black window and notice how the value in the upper left-hand corner changes. This table has 16 rows by 16 columns with 256 cells. Cell value ranges from 0 to 255, starting from the top left corner at zero and ending at the lower right corner at 255.

### Step 4: Selecting the First Color

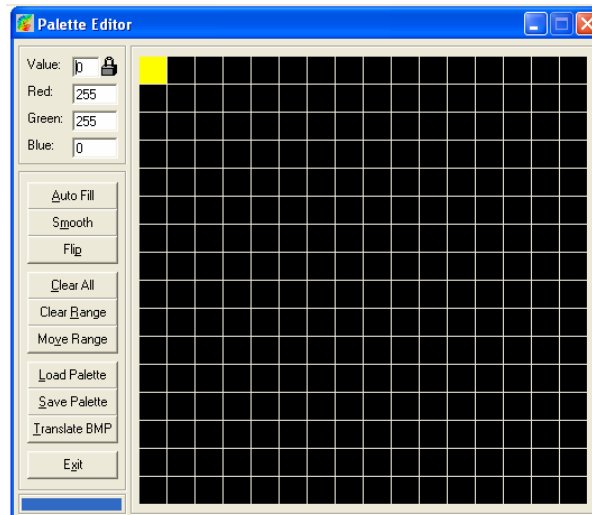
Double click on the first cell (upper left corner).



A new window will open. Select a color of your choice.

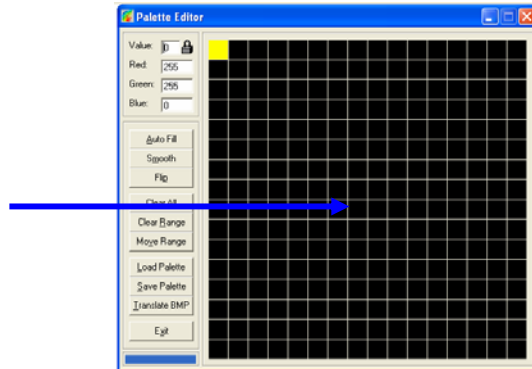


Click OK. The selected color will be displayed on the “0” cell of the palette editor.

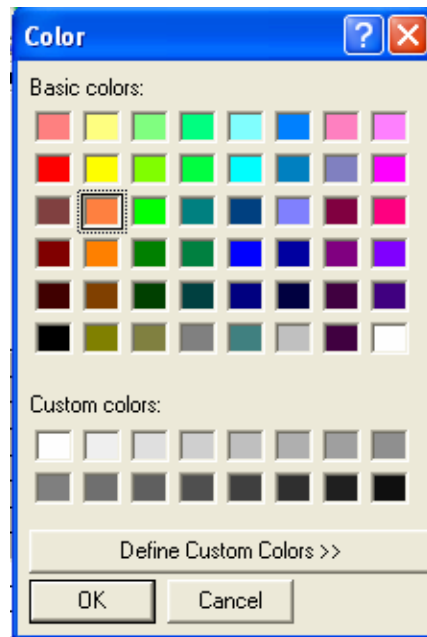


## Step 5: Selecting the Second Color

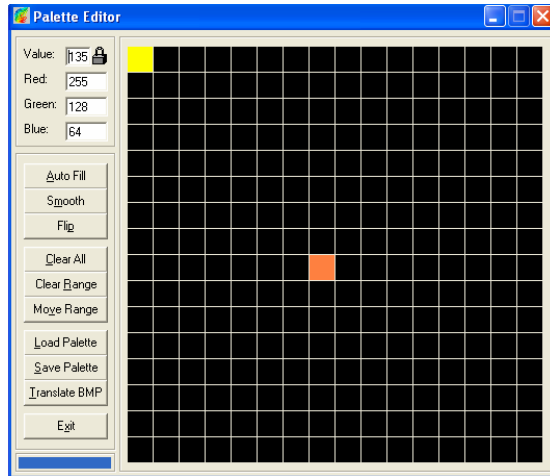
Click somewhere in the middle of the black window.



From the “Color” window, select the orange box and click OK.

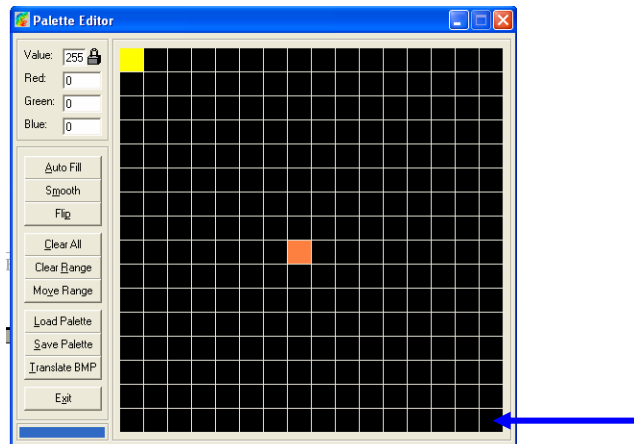


The selected color will be displayed.

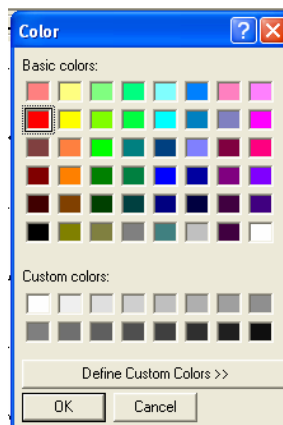


### Step 6: Selecting the Third Color

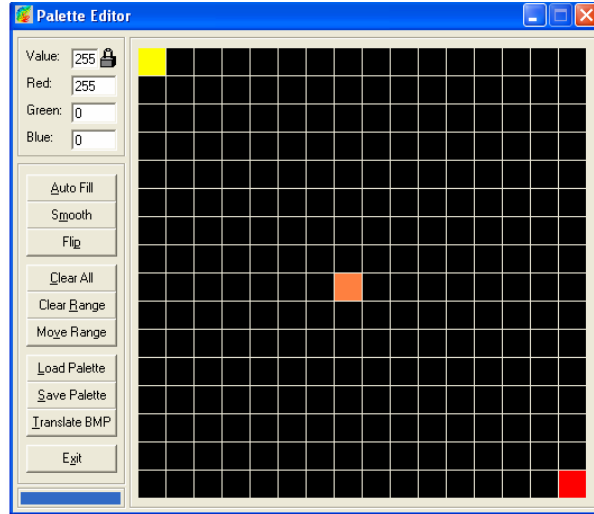
Go the last cell (lower right corner) and double click to select it.



From the "Color" window, select the red box and click OK.



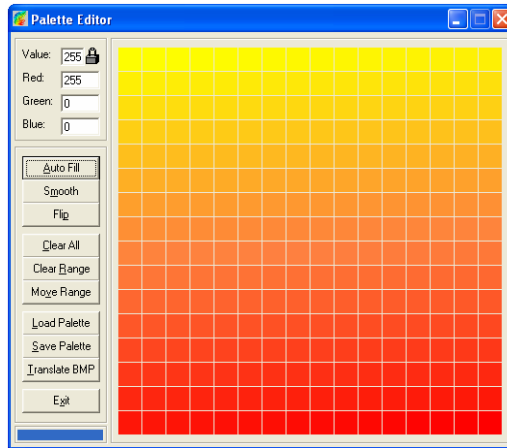
The red color will be displayed in the selected cell.



### Step 7: Filling the Rest of the Cells

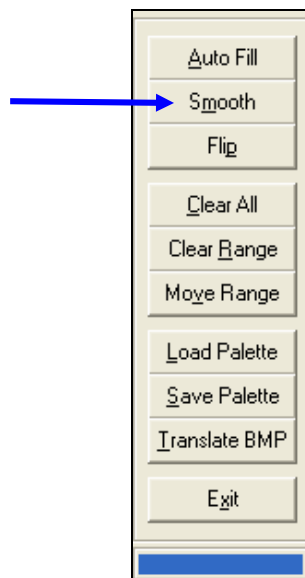
Now that we have chosen our main colors, we are ready to fill the rest. Click on the “Auto Fill” button.



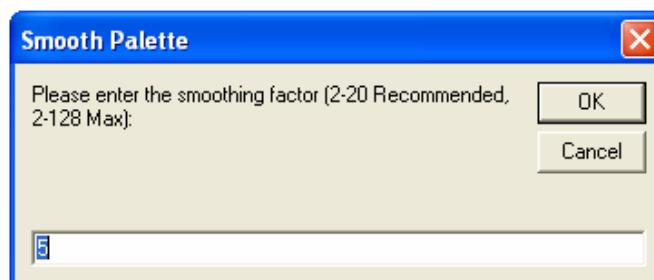


### Step 8: Smooth

Another option we have with the palette editor is to smooth the transition between colors. Click on the "Smooth" button.

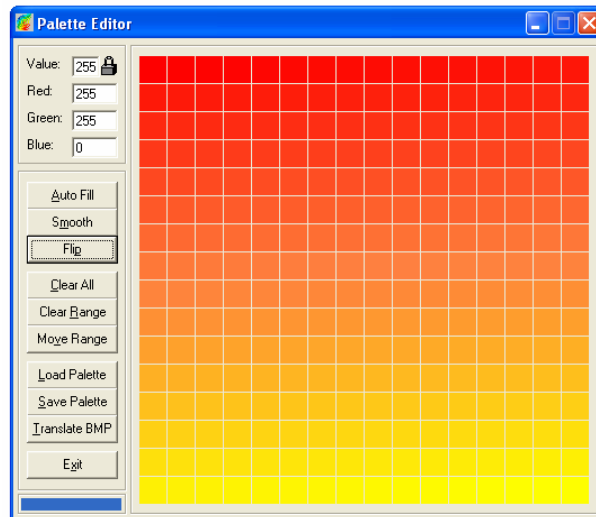
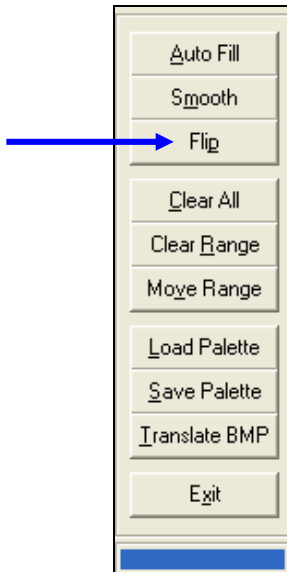


Choose a number between 2 and 20. Choose 5 for this exercise.



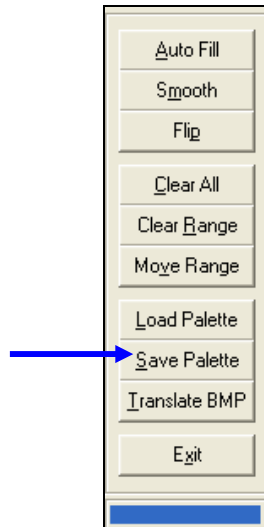
### Step 9: Flip the Color

If you would like to reverse the color so that the low value (0) will be red, click on the “Flip” button.

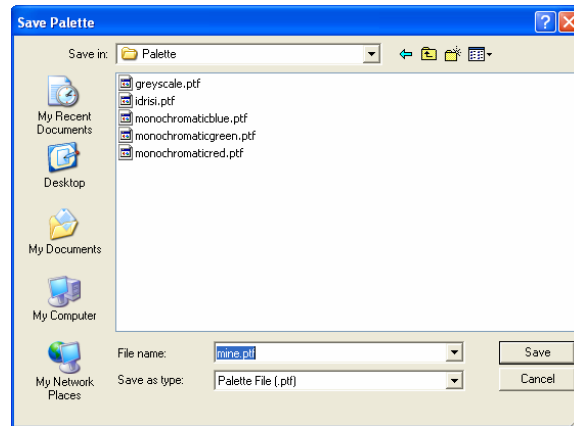


### Step 11: Saving Your Palette

From the palette editor menu click the “Save Palette” button.



Browse to your folder and save it as “mine”. Notice that palette names have a \*.ptf extension.



### Step 11: Clear All

If you are unsatisfied with your palette you can clear everything and start all over by clicking the “Clear All” button.

