

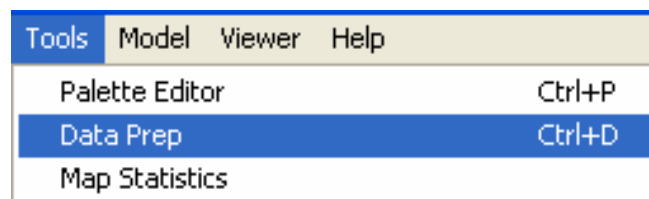
Exercise 3 Data Prep

Data preparation allows us to add a prefix/suffix, scale, and/or trim the data set.

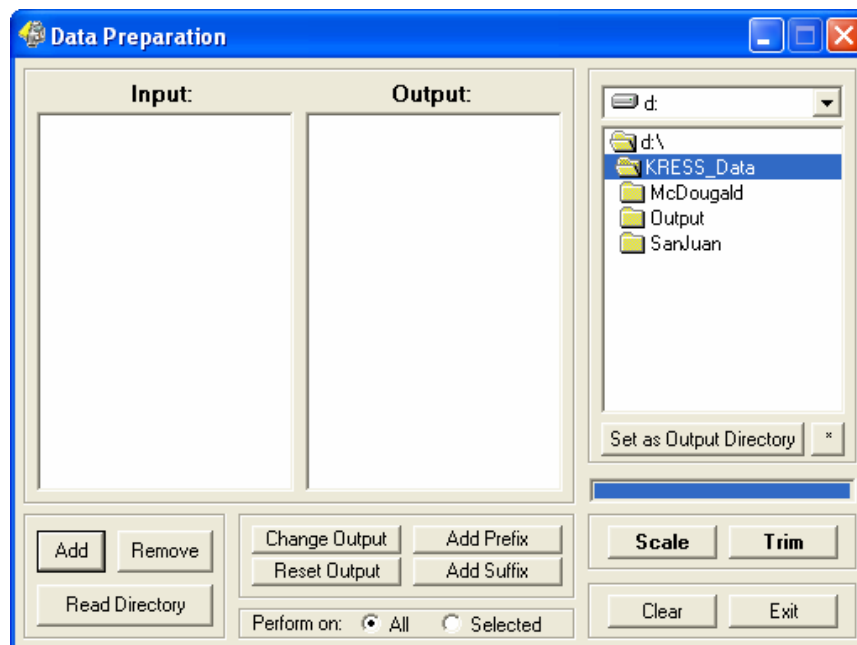
Step 1: Accessing Data Prep

This exercise is about preparing the data for analysis. There are two ways to begin this process:

Option 1: Access “Data Prep” from the “Tools” menu at the top of the screen:

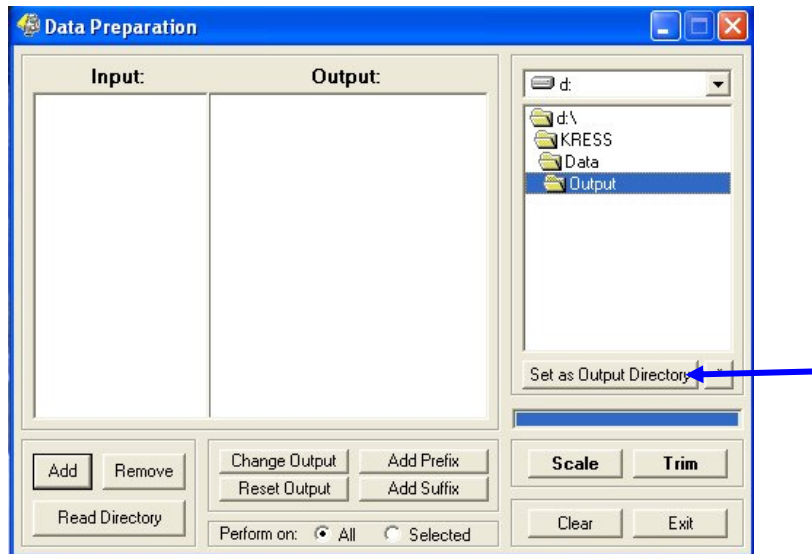


Option 2: Click on the button with the Data Preparation icon (shown below), on the downward arrow, and select the “Data Preparation” tab from the menu.



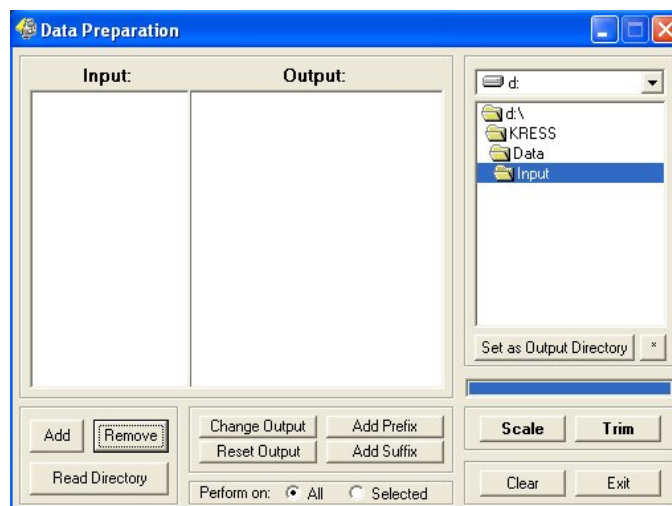
Step 2: Setting Up the Output Directory

Leaving the data preparation window open, it is now necessary to set up your output directory. This directory will be used as the data source when running the model.

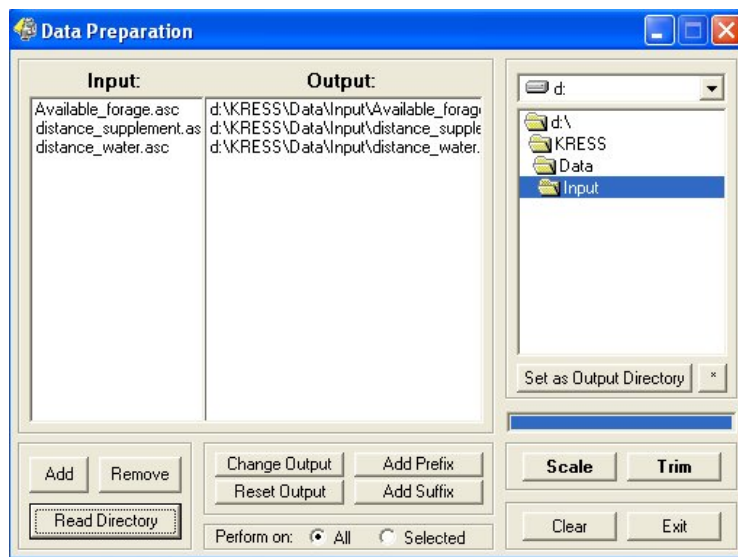
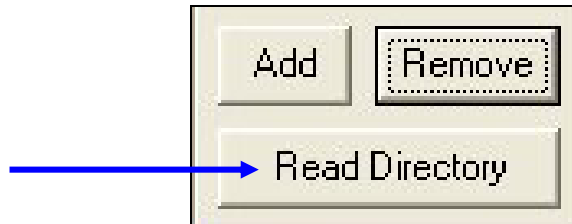


Step 3: Loading the Raw Data

As mentioned above, new data is saved in the input folder directory and can be accessed through the "Data Preparation" menu option.

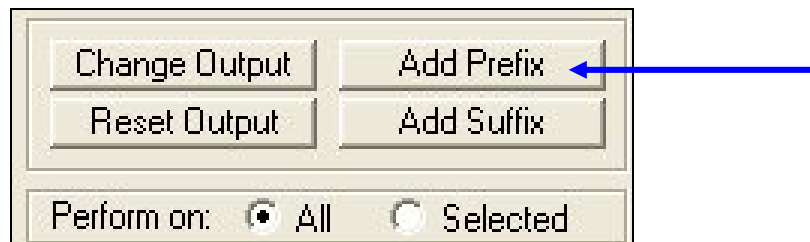


To add factors, look to the lower left hand corner of the “Data Preparation” window where there is a rectangular box with the available options: “Add,” “Remove,” and “Read Directory.” To add one factor at a time, highlight the selected file and click “Add.” To select and add all the factors, click on “Read Directory.”

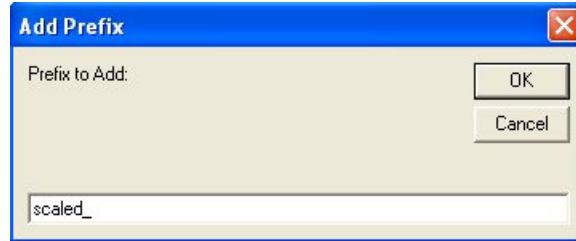


Step 4: Adding a Prefix/Suffix to the Scaled Data

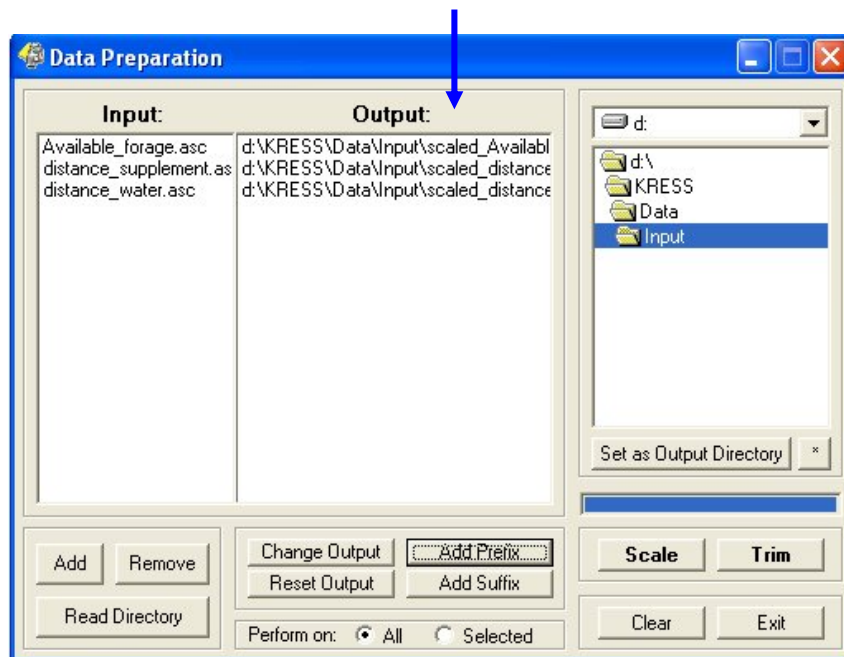
To avoid overwriting the original data, a prefix or suffix can be added to the scaled data file. This will be attached to the original name, making the files easy to organize while differentiating between data sets. In the bottom-middle section of the “Data Preparation” window, select “Add Prefix.”



In the window that pops up, write “scaled_” and then click OK (as shown below).

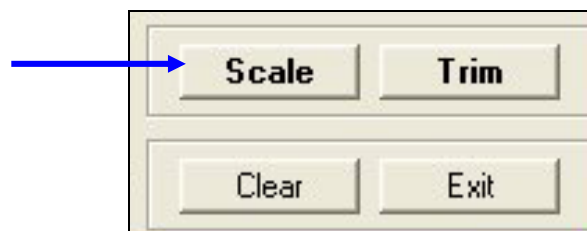


This will result in a new file, as seen below, named “d:\KRESS\Data\Input\scaled_...,” making it easy for you to find and apply this data at a later time.

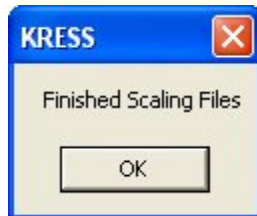


Step 5: Scaling the Data

In order to scale the data, find the box labeled “Scale” on the lower right-hand side of the “Data Preparation” window (shown below).



When KRESS finishes scaling the files click on OK.



Step 6: Trimming the Data

The data is trimmed when the area of interest is too large. This example does not use this step; however the process is similar to the previous example of scaling the data.

Step 7: Exiting the Data Prep Window

To exit the data preparation window, click on the "Exit" button in the lower right-hand region.

