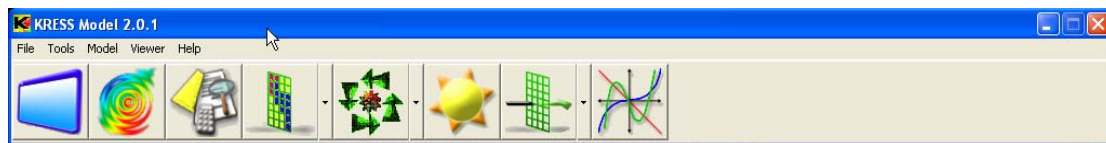


Exercise 8

Map Statistics

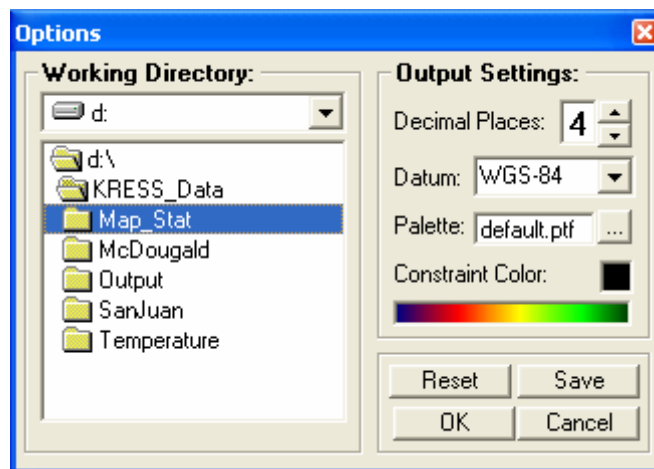
Step 1: Starting the KRESS program

To launch the KRESS model, double click on the icon.



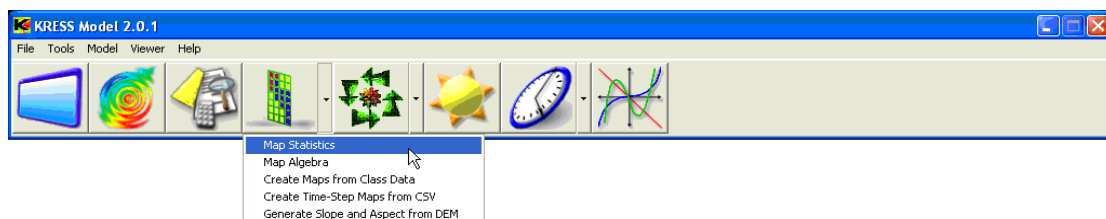
Step 2: Setting the Working Directory and Output Settings

If you have not already done so, go to “Global Settings” under the “File” menu to set your working directory. For these examples, set the working directory as Kress_Data/Map_Stat. The Datum is WGS-84, and four decimal places should be adequate. These examples will be done using the default palette and a black constraint color. Once all of these settings have been set, the “Options” form should look like the graphic below.

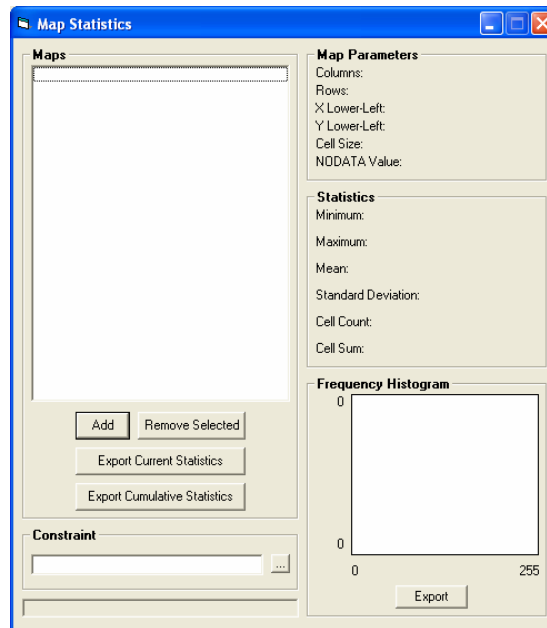


Step 3: Launching Map Statistics

Now you can load the map statistics form by clicking “Map Statistics” on the down arrow next to the map icon. You can also reach the form by clicking on “Map Statistics” under the “Tools” menu.

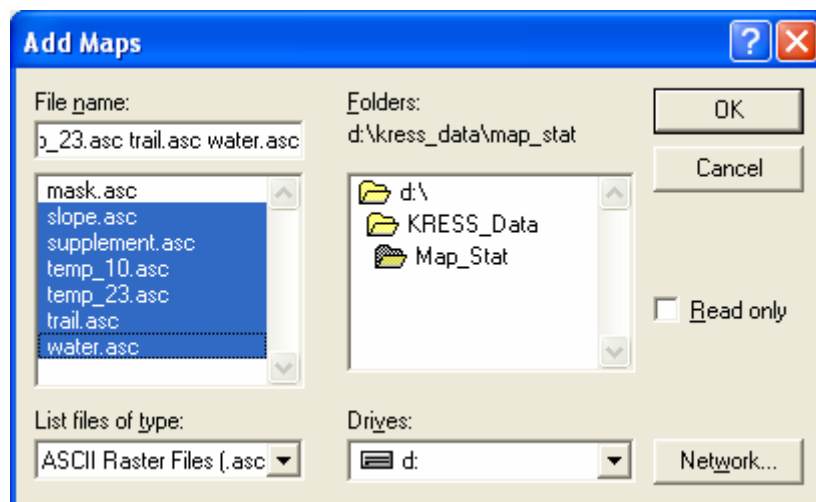


The form will open and look like this:

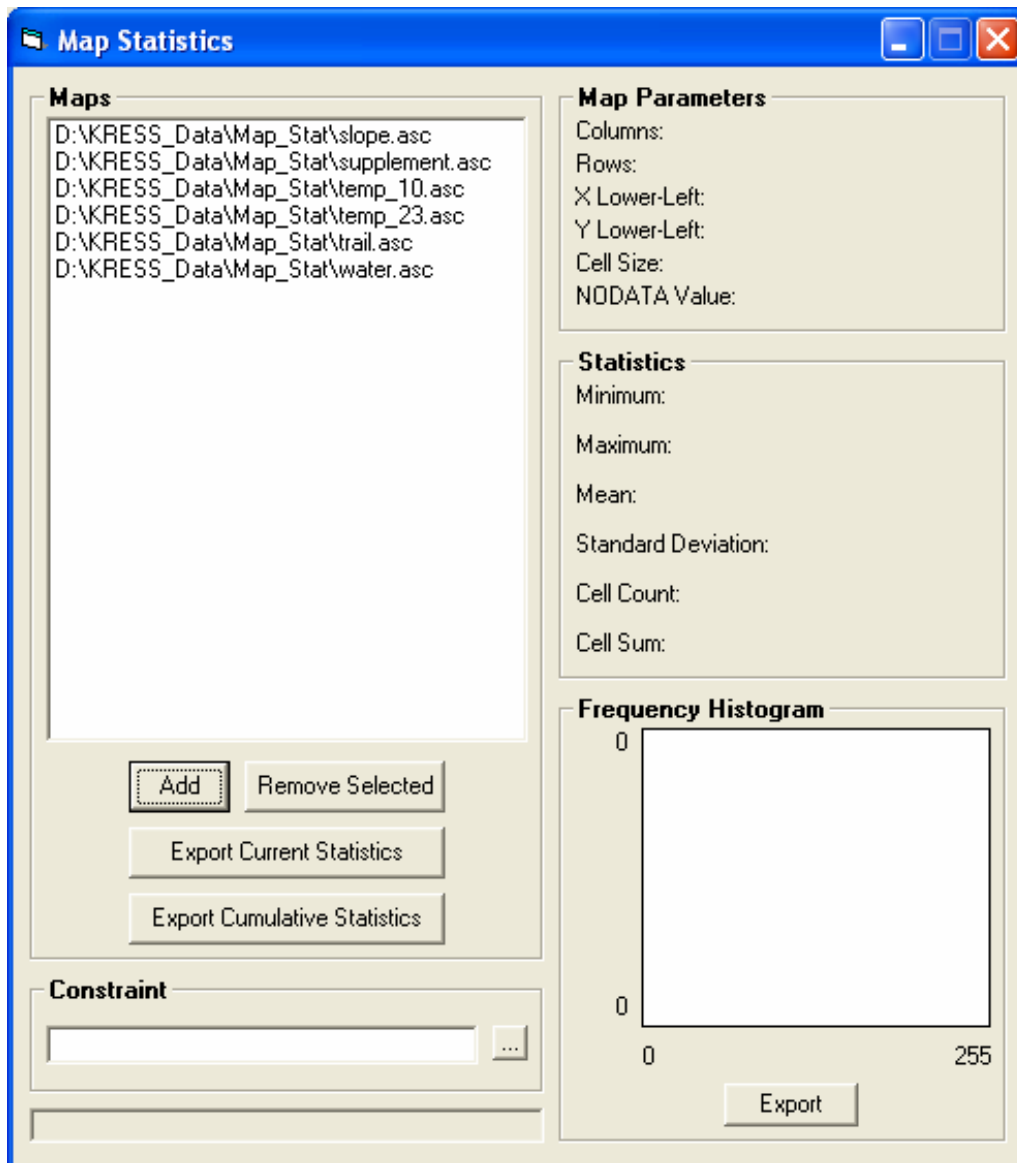


Step 3: Loading maps

To use the Map Statistics form, you must load maps into the program. To do this, click the “Add” button. This form will pop up, allowing you to select the desired maps:

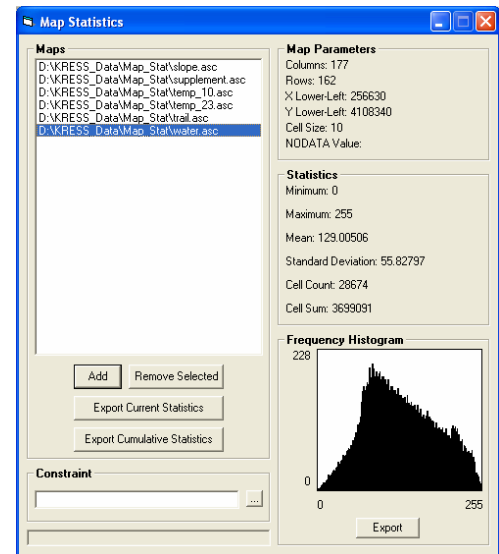
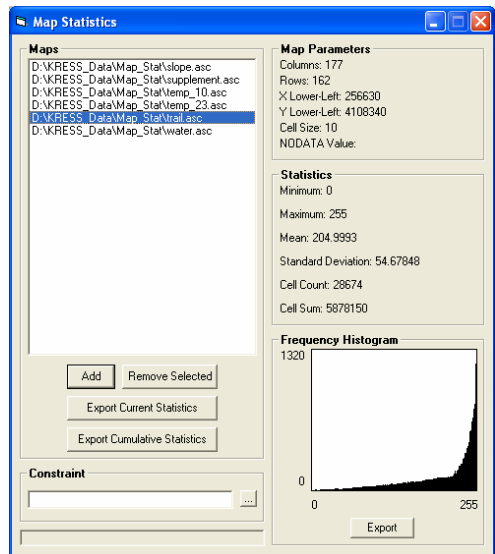
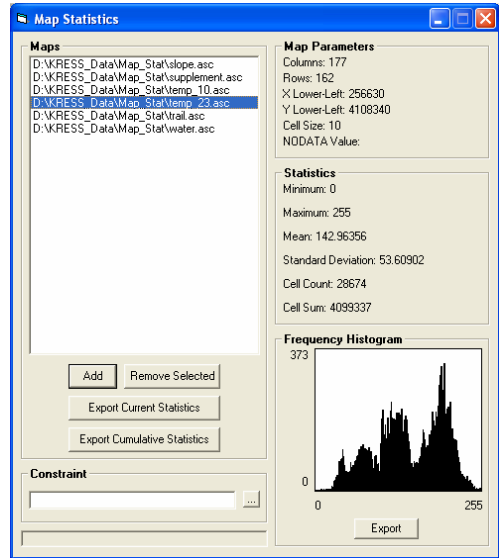
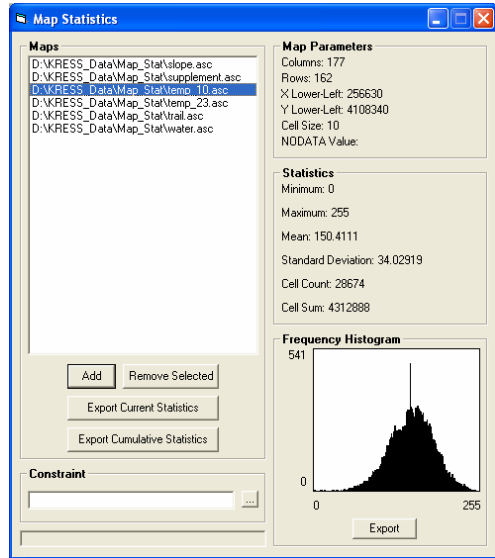
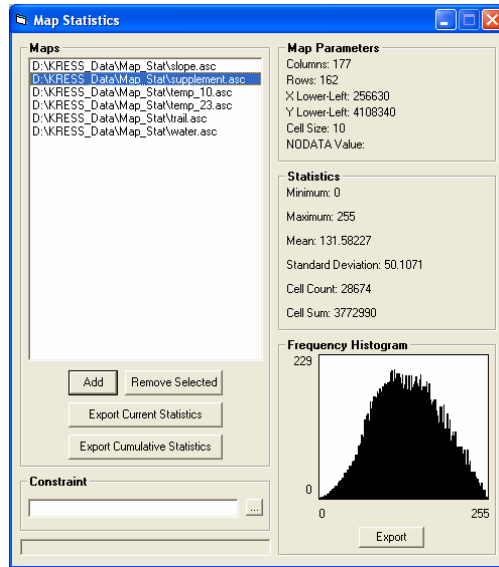
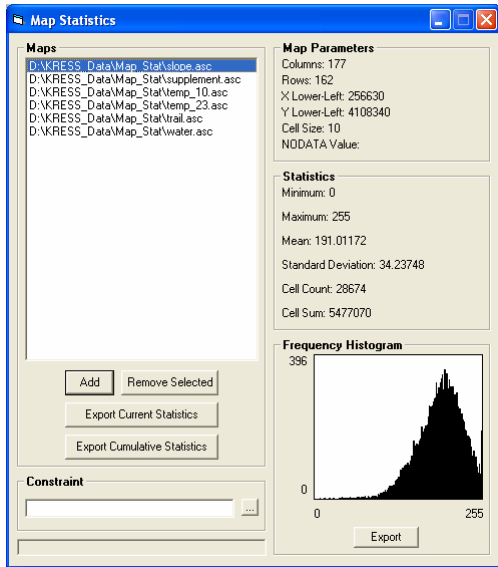


Open the folder named Map_Stat. We are going to load all the maps in this folder, with the exception of the mask. You can select multiple maps in the browser by clicking and holding down the mouse, then dragging it over the desired files. You can also hold the ctrl key and click on each map individually. For this example, select all the files except for mcdmask.asc, which is a constraint file. Once you have selected all the files, click the “OK” button.



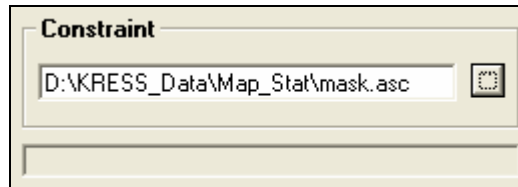
Step 4: Checking Map Parameters, Statistics, and Frequency Histogram

Now all the maps are listed in the “Maps” frame. By clicking on them, the program lists parameters in the upper right corner of the frame, and the statistics just underneath. There is also a frequency histogram diagram showing the distribution of values in the map. Clicking on a different map in the “Maps” frame will load the parameters, statistics, and histogram for that map.



Step 5: Adding a Constraint

If you have a constraint, it can be loaded by pressing the “...” button next to the “Constraint” frame. The browse window will pop up again allowing you to browse for your constraint. For this example, select the mask.asc file and click “OK”.



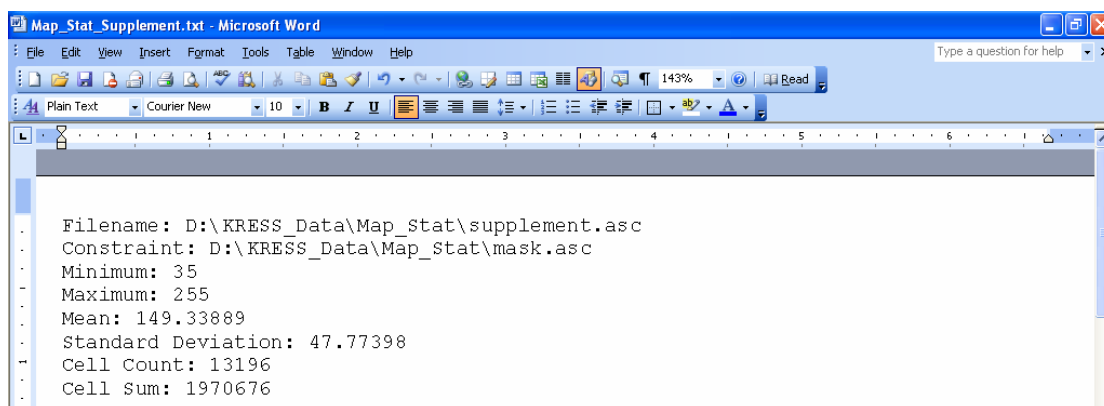
Step 6: Exporting Current Statistics

The data statistics of a single map can be exported as a .txt file by clicking the “Export Current Statistics” button. For this example, select the map titled Supplement. Click the **Export Current Statistics** button, and in the browser that pops up, type in the filename Map_Stat_Supplement, then click the **Save** button.



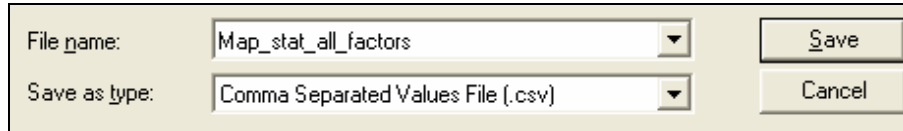
Step 7: Opening Map Statistics in a Text Editor

After saving the file, you can open it using a text editor program (word, notepad... etc) to see the information the file contains.



Step 8: Exporting Cumulative Statistics

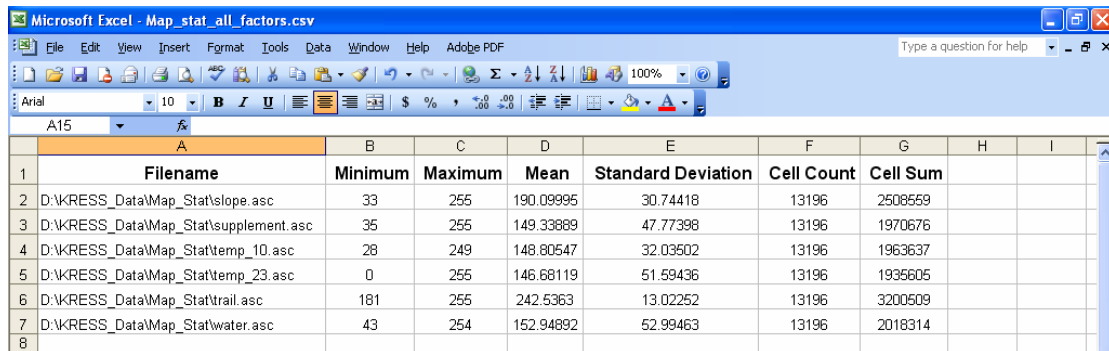
You can save time by exporting the statistics for all the maps by clicking the “Export Cumulative Statistics” button. This will export statistics for all the maps as a .csv file.



File name: Map_stat_all_factors Save

Save as type: Comma Separated Values File (.csv) Cancel

Open the file in excel.



	A	B	C	D	E	F	G	H	I
1	Filename	Minimum	Maximum	Mean	Standard Deviation	Cell Count	Cell Sum		
2	D:\KRESS_Data\Map_Stat\slope.asc	33	255	190.09995	30.74418	13196	2508559		
3	D:\KRESS_Data\Map_Stat\supplement.asc	35	255	149.33889	47.77398	13196	1970676		
4	D:\KRESS_Data\Map_Stat\temp_10.asc	28	249	148.80547	32.03502	13196	1963637		
5	D:\KRESS_Data\Map_Stat\temp_23.asc	0	255	146.68119	51.59436	13196	1935605		
6	D:\KRESS_Data\Map_Stat\trail.asc	181	255	242.5363	13.02252	13196	3200509		
7	D:\KRESS_Data\Map_Stat\water.asc	43	254	152.94892	52.99463	13196	2018314		
8									