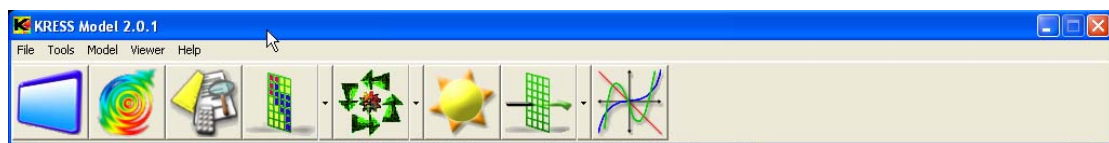


# Exercise 10

## Create Maps from Class Data

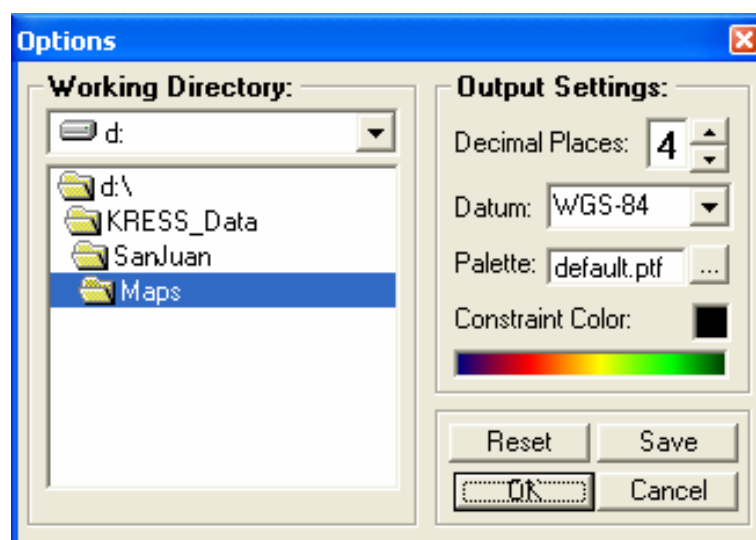
### Step 1: Starting the KRESS Program

To launch the KRESS model, double click on the icon.



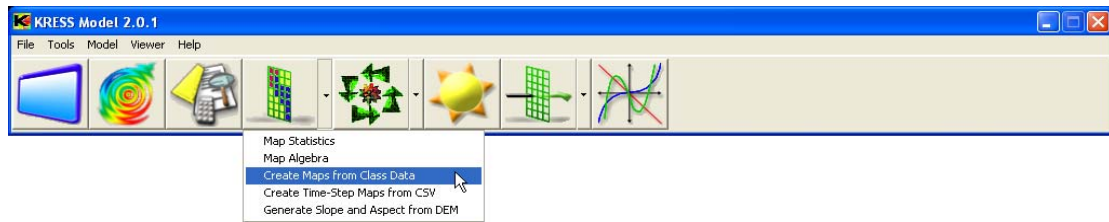
### Step 2: Setting the Working Directory and Output Setting

Depending on where you saved the files for this exercise, set your working directory. Choose a palette for the factor and constraint layers.

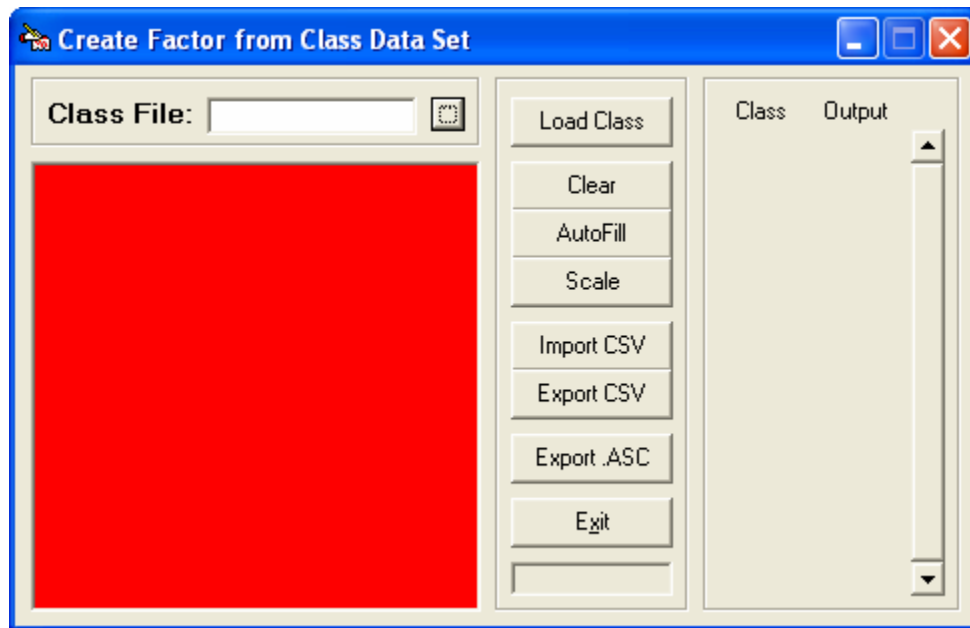


### Step 3: Launch the Multi-Criteria Analyses

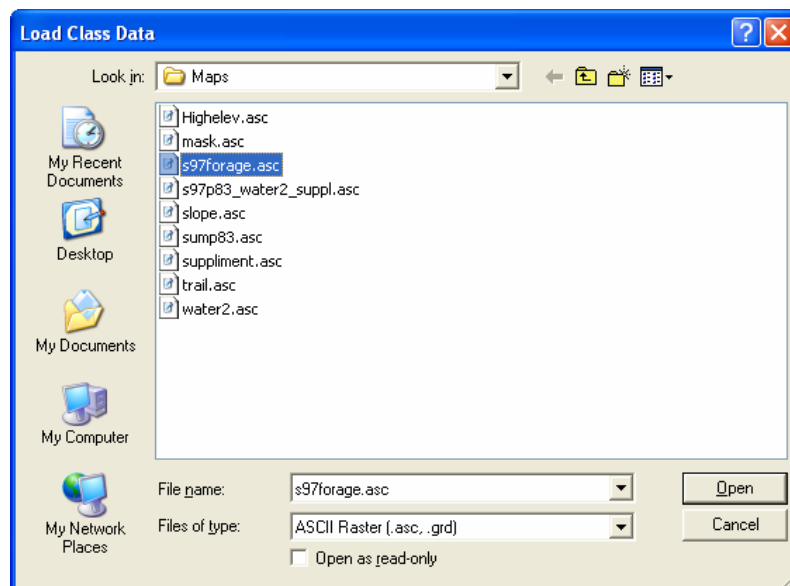
From the raster tools drop down menu select “Create Maps from Class Data”.



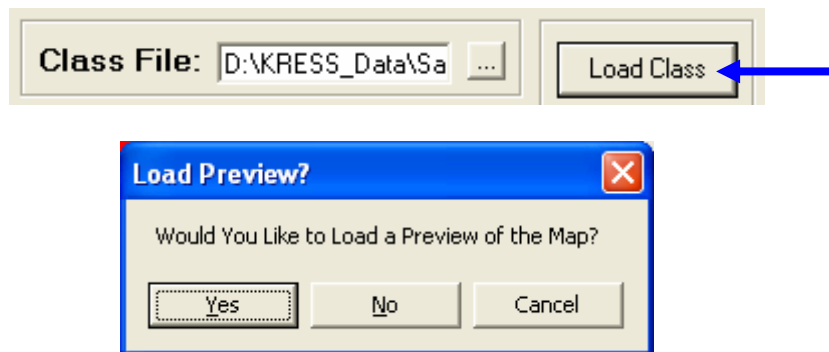
A new window will pop up.



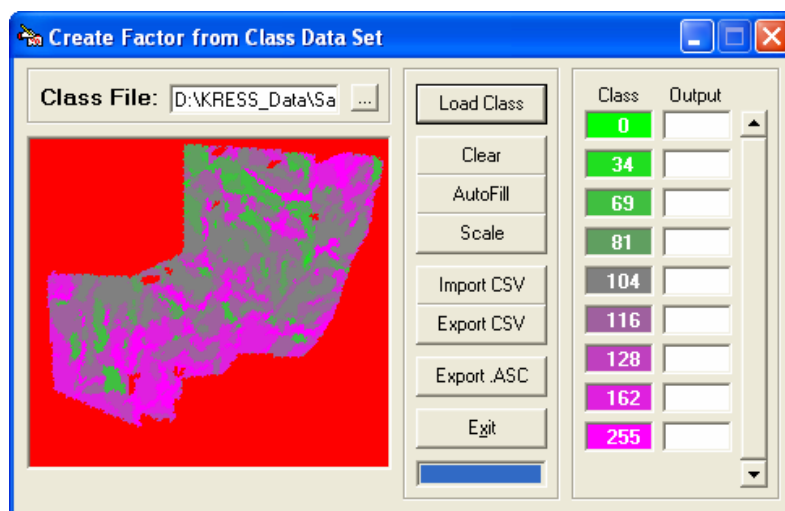
Click the “...” button for the “Class File” box and select the file s97forage.asc.



Then click the “Load Class” button to display the file in the frame on the left.

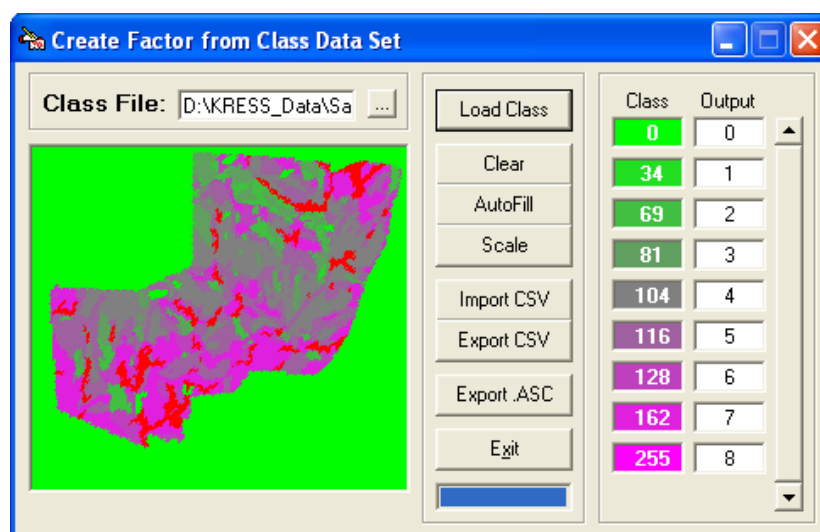


Click “Yes”.



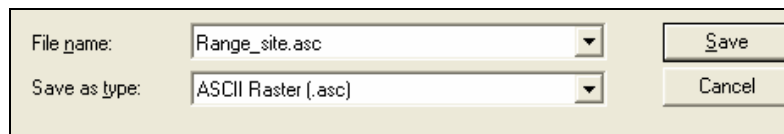
#### Step 4: Filling in the Output Value

Now, fill in the numbers in the “Output” column listing the numbers 0 through 8, as shown below.



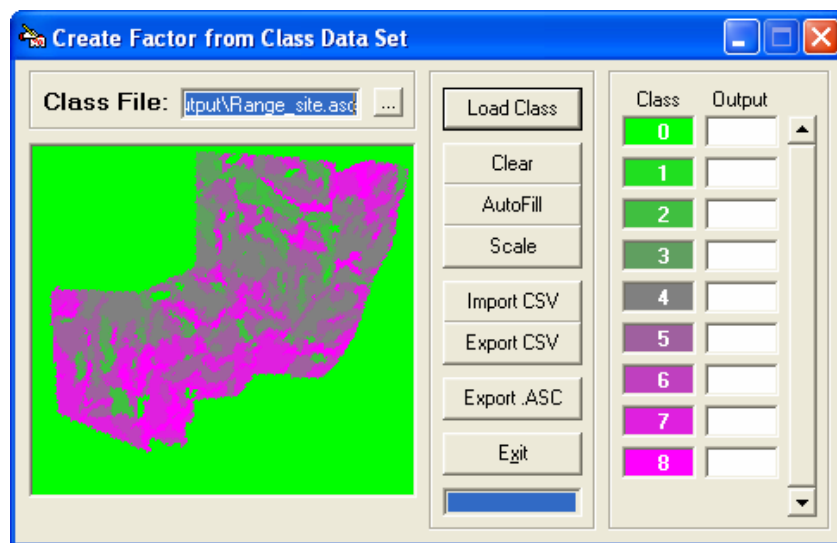
### Step 5: Exporting the ASCII File

Click the “Export.ASC” button and save the new map as Range\_site.asc.



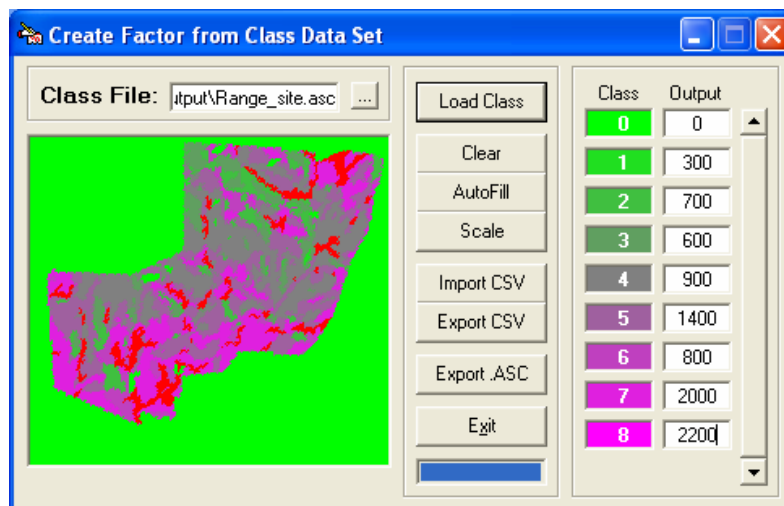
### Step 6: Loading the Range Site File

Load this file by clicking the “...” button and browsing for it, then click the “Load Class” button again to display the map.



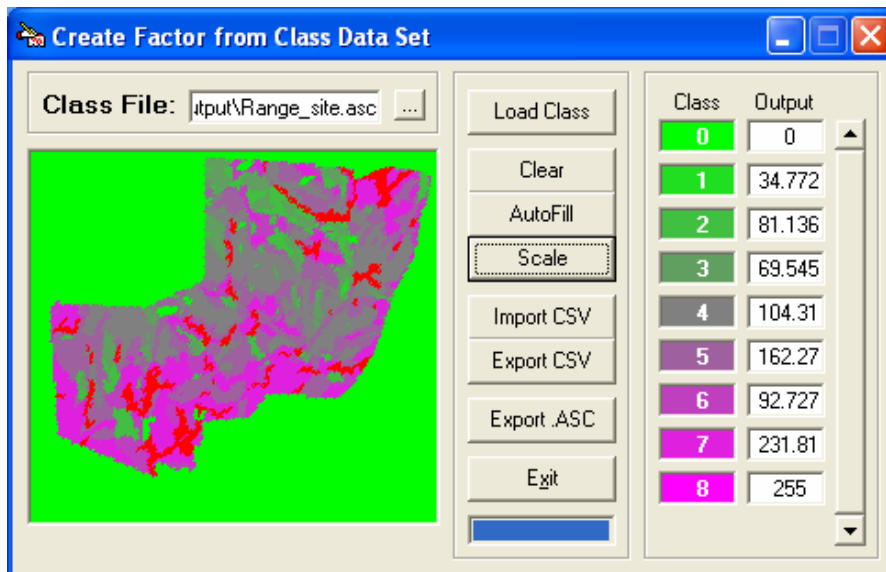
### Step 7: Filling in New Values for Each Class

Now enter in new values for each of the classes so that your form matches the form below.



### Step 8: Scaling the Output

Click on the “Scale” button to scale your factors to the range of 0 to 255 (so that the map is compatible with the other scaled maps in KRESS).



### Step 9: Exporting the Final Map and Opening it in the KRESS Viewer

Click the “Export .ASC” button to export your new scaled forage map. When opened in the KRESS viewer, it should look like this.

